

POLARIS®

COMPRESSION CONNECTORS

POLARIS MAKES THE CONNECTION

Our compression connectors are the pro's choice for reliability and ease of use. They're compatible with many standard crimp tools and come with clearly legible size markings to save installers time. Plus, we offer a complete range for any application, from power distribution to data centers.



THE POLARIS DIFFERENCE

Improved performance

Experience better conductivity, lower signal loss, and reduced downtime with Polaris connectors.

Oxide Inhibitor

Pre-filled with oxide inhibitor to protect against oxidation.

Enhanced durability

Our corrosion-resistant connectors withstand the elements, ensuring long-lasting performance.

Clear color coding

Each connector is color coded with clear indication of conductor size and crimp location.

Simplified installation

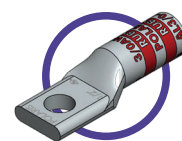
Save time and labor with our easy-to-use compression design.

UL listed with most major brand tools

Use your favorite crimp tool and die. Polaris connectors are listed for use with tools from most major brands

MULTIPLE OPTIONS

ALUMINUM LUGS



AL, AL-N, AL-NT

COPPER LUGS

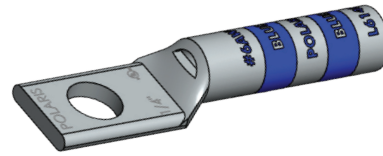


L, LN, SL-N, L-B, L-NB, GL, GL-N, GL-B, GL-NB

COMPRESSION LUGS

L SERIES

Long Barrel Copper 1-Hole



POLARIS®

FEATURES

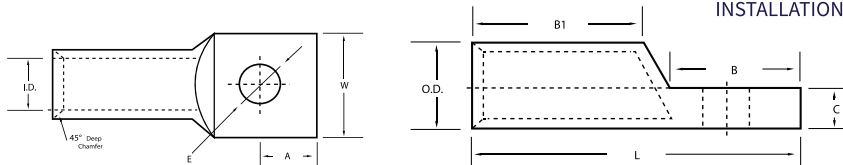
Produced from high conductivity copper tubing.
 Tin-plated to provide corrosion low contact resistance.
 Marked with die index and color coded.
 Listed for 35KV max when properly installed and to cable manufacturer instructions.
 For applications greater than 2000V, consult the cable Manufacturer voltage stress relief instructions.

SPECIFICATIONS

UL486A Listed Wire Connector.
 UL467 Grounding & Bonding (Sizes 8 AWG - 3/0 AWG).
 Max ampacity is based on NEC 310.15, insulation type, and conductor material. Please consult your current NEC manual.
 * CLASS B OR C BUILDING WIRE CU CABLE ONLY.
 Temperature Rating: 90 °C.
 Voltage: 600V

Part Numbers ending in “P” have a “peep” or sight inspection hole.

*EXPANDED WIRE RANGE when installed with NSI N12ID dieless compression tool.
 UL Listed with other tools: FOR TOOL/DIE CRIMPING INFORMATION, PLEASE SEE INSTALLATION INSTRUCTIONS



“•” Indicates Flex Rated to either class K, H, G, I, M, DLO see product drawing or consult customer service for details.

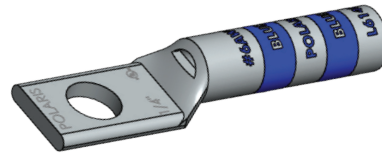
SKU	Material	Conductor Type	Color Code	L (IN)	W (IN)	Mounting Bolt Size (IN)	Barrel ID (IN)	Barrel OD (IN)	Barrel Length (B1) (IN)	Wire Range	Expanded Wire Range	Flex Rated
L810	Cu	Cu	Red	1.52	0.42	#10 (3/16)	0.17	0.27	0.81	8 AWG	8 AWG	•
L810P	Cu	Cu	Red	1.52	0.42	#10 (3/16)	0.17	0.27	0.81	8 AWG	8 AWG	•
L814	Cu	Cu	Red	1.52	0.42	1/4	0.17	0.27	0.81	8 AWG	8 AWG	•
L814P	Cu	Cu	Red	1.52	0.42	1/4	0.17	0.27	0.81	8 AWG	8 AWG	•
L838	Cu	Cu	Red	1.52	0.57	3/8	0.17	0.27	0.81	8 AWG	8 AWG	•
L838P	Cu	Cu	Red	1.52	0.57	3/8	0.17	0.27	0.81	8 AWG	8 AWG	•
L610	Cu	Cu	Blue	1.77	0.42	#10 (3/16)	0.21	0.30	0.98	6 AWG	6 AWG - 8 AWG	•
L614	Cu	Cu	Blue	1.77	0.42	1/4	0.21	0.30	0.98	6 AWG	6 AWG - 8 AWG	•
L614P	Cu	Cu	Blue	1.77	0.42	1/4	0.21	0.30	0.98	6 AWG	6 AWG - 8 AWG	•
L638	Cu	Cu	Blue	1.91	0.59	3/8	0.21	0.30	0.98	6 AWG	6 AWG - 8 AWG	•
L638P	Cu	Cu	Blue	1.91	0.59	3/8	0.21	0.30	0.98	6 AWG	6 AWG - 8 AWG	•
L656	Cu	Cu	Blue	1.91	0.59	5/16	0.21	0.30	0.98	6 AWG	6 AWG - 8 AWG	•
L656P	Cu	Cu	Blue	1.91	0.59	5/16	0.21	0.30	0.98	6 AWG	6 AWG - 8 AWG	•
L410	Cu	Cu	Gray	1.77	0.49	#10 (3/16)	0.25	0.34	0.98	4 AWG	4 AWG - 6 AWG	•
L414	Cu	Cu	Gray	1.77	0.49	1/4	0.25	0.34	0.98	4 AWG	4 AWG - 6 AWG	•
L414P	Cu	Cu	Gray	1.77	0.49	1/4	0.25	0.34	0.98	4 AWG	4 AWG - 6 AWG	•
L438	Cu	Cu	Gray	1.91	0.59	3/8	0.25	0.34	0.98	4 AWG	4 AWG - 6 AWG	•
L438P	Cu	Cu	Gray	1.91	0.59	3/8	0.25	0.34	0.98	4 AWG	4 AWG - 6 AWG	•
L456	Cu	Cu	Gray	1.77	0.49	5/16	0.25	0.34	0.98	4 AWG	4 AWG - 6 AWG	•
L456P	Cu	Cu	Gray	1.77	0.49	5/16	0.25	0.34	1.10	4 AWG	4 AWG - 6 AWG	•
L314	Cu	Cu	White	2.07	0.53	1/4	0.28	0.38	1.10	3 AWG	3 AWG - 6 AWG	•
L338	Cu	Cu	White	2.07	0.59	3/8	0.28	0.38	1.10	3 AWG	3 AWG - 6 AWG	•
L214	Cu	Cu	Brown	2.07	0.6	1/4	0.32	0.42	1.10	2 AWG	2 AWG - 6 AWG	•
L214P	Cu	Cu	Brown	2.07	0.6	1/4	0.32	0.42	1.10	2 AWG	2 AWG - 6 AWG	•
L238	Cu	Cu	Brown	2.07	0.6	3/8	0.32	0.42	1.10	2 AWG	2 AWG - 6 AWG	•
L238P	Cu	Cu	Brown	2.07	0.6	3/8	0.32	0.42	1.10	2 AWG	2 AWG - 6 AWG	•
L256	Cu	Cu	Brown	2.07	0.6	5/16	0.32	0.42	1.10	2 AWG	2 AWG - 6 AWG	•
L256P	Cu	Cu	Brown	2.07	0.6	5/16	0.32	0.42	1.10	2 AWG	2 AWG - 6 AWG	•
L138	Cu	Cu	Green	2.21	0.67	3/8	0.36	0.47	1.10	1 AWG	1 AWG - 6 AWG	•



COMPRESSION LUGS

L SERIES (CONT'D)

Long Barrel Copper 1-Hole



POLARIS[®]

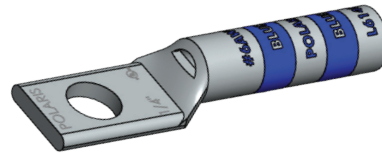
SKU	Material	Conductor Type	Color Code	L (IN)	W (IN)	Mounting Bolt Size (IN)	Barrel ID (IN)	Barrel OD (IN)	Barrel Length (B1) (IN)	Wire Range	Expanded Wire Range	Flex Rated
L156	Cu	Cu	Green	2.11	0.67	5/16	0.36	0.47	1.10	1 AWG	1 AWG - 6 AWG	•
L1014P	Cu	Cu	Pink	2.21	0.74	1/4	0.39	0.52	1.20	1/0 AWG	1/0 AWG - 6 AWG	•
L1014	Cu	Cu	Pink	2.21	0.74	1/4	0.39	0.52	1.20	1/0 AWG	1/0 AWG - 6 AWG	•
L1038	Cu	Cu	Pink	2.21	0.74	3/8	0.39	0.52	1.20	1/0 AWG	1/0 AWG - 6 AWG	•
L1038P	Cu	Cu	Pink	2.21	0.74	3/8	0.39	0.52	1.20	1/0 AWG	1/0 AWG - 6 AWG	•
L1048	Cu	Cu	Pink	2.5	0.74	1/2	0.39	0.52	1.20	1/0 AWG	1/0 AWG - 6 AWG	•
L1056	Cu	Cu	Pink	2.21	0.74	5/16	0.39	0.52	1.20	1/0 AWG	1/0 AWG - 6 AWG	•
L1056P	Cu	Cu	Pink	2.21	0.74	5/16	0.39	0.52	1.20	1/0 AWG	1/0 AWG - 6 AWG	•
L2014	Cu	Cu	Black	2.68	0.82	1/4	0.44	0.56	1.38	2/0 AWG	2/0 AWG - 4 AWG	•
L2014P	Cu	Cu	Black	2.68	0.82	1/4	0.44	0.56	1.38	2/0 AWG	2/0 AWG - 4 AWG	•
L2038	Cu	Cu	Black	2.68	0.82	3/8	0.44	0.56	1.38	2/0 AWG	2/0 AWG - 4 AWG	•
L2038P	Cu	Cu	Black	2.68	0.82	3/8	0.44	0.56	1.38	2/0 AWG	2/0 AWG - 4 AWG	•
L2048	Cu	Cu	Black	2.68	0.82	1/2	0.44	0.56	1.38	2/0 AWG	2/0 AWG - 4 AWG	•
L2048P	Cu	Cu	Black	2.68	0.82	1/2	0.44	0.56	1.38	2/0 AWG	2/0 AWG - 4 AWG	•
L2048P	Cu	Cu	Black	2.68	0.82	1/2	0.44	0.56	1.38	2/0 AWG	2/0 AWG - 4 AWG	•
L3014	Cu	Cu	Orange	2.8	0.9	1/4	0.49	0.62	1.38	3/0 AWG	3/0 AWG - 2 AWG	•
L3014P	Cu	Cu	Orange	2.8	0.9	1/4	0.49	0.62	1.38	3/0 AWG	3/0 AWG - 2 AWG	•
L3038	Cu	Cu	Orange	2.8	0.9	3/8	0.49	0.62	1.38	3/0 AWG	3/0 AWG - 2 AWG	•
L3038P	Cu	Cu	Orange	2.8	0.9	3/8	0.49	0.62	1.38	3/0 AWG	3/0 AWG - 2 AWG	•
L3048	Cu	Cu	Orange	2.8	0.9	1/2	0.49	0.62	1.38	3/0 AWG	3/0 AWG - 2 AWG	•
L3048P	Cu	Cu	Orange	2.8	0.9	1/2	0.49	0.62	1.38	3/0 AWG	3/0 AWG - 2 AWG	•
L4048	Cu	Cu	Purple	2.8	1	1/2	0.55	0.69	1.42	4/0 AWG	4/0 AWG - 1 AWG	•
L25048	Cu	Cu	Yellow	3.03	1.09	1/2	0.59	0.75	1.61	250 MCM	250 MCM - 1/0 AWG	•
L30048	Cu	Cu	White	3.39	1.19	1/2	0.66	0.82	1.97	300 MCM	300 MCM - 2/0 AWG	•
L35048	Cu	Cu	Red	3.47	1.28	1/2	0.7	0.87	1.97	350 MCM	350 MCM - 3/0 AWG	•
L4014	Cu	Cu	Purple	2.8	1	1/4	0.55	0.69	1.42	4/0 AWG	4/0 AWG - 1 AWG	•
L4014P	Cu	Cu	Purple	2.8	1	1/4	0.55	0.69	1.42	4/0 AWG	4/0 AWG - 1 AWG	•
L4038	Cu	Cu	Purple	2.8	1	3/8	0.55	0.69	1.42	4/0 AWG	4/0 AWG - 1 AWG	•
L4038P	Cu	Cu	Purple	2.8	1	3/8	0.55	0.69	1.42	4/0 AWG	4/0 AWG - 1 AWG	•
L40048	Cu	Cu	Blue	3.86	1.39	1/2	0.76	0.95	1.97	400 MCM	400 MCM - 4/0 AWG	•
L4048P	Cu	Cu	Purple	2.8	1	1/2	0.55	0.69	1.42	4/0 AWG	4/0 AWG - 1 AWG	•
L50048	Cu	Cu	Brown	4.13	1.54	1/2	0.84	1.06	2.24	500 MCM	500 MCM - 250 MCM	•
L50058	Cu	Cu	Brown	4.13	1.54	5/8	0.84	1.06	2.24	500 MCM	500 MCM - 250 MCM	•
L60058	Cu	Cu	Green	4.25	1.72	5/8	0.93	1.19	2.24	600 MCM	600 MCM - 250 MCM	•
L75048	Cu	Cu	Black	5.16	1.9	1/2	1.04	1.31	2.64	750 MCM	750 MCM - 500 MCM	•
L75058	Cu	Cu	Black	5.16	1.9	5/8	1.04	1.31	2.64	750 MCM	750 MCM - 500 MCM	•
L10058	Cu	Cu	White	5.61	2.15	5/8	1.19	1.53	3.15	1000 MCM	1000 MCM - 750 MCM	•
L638B	Cu	Cu	Blue	1.91	0.59	3/8	0.21	0.30	0.98	6 AWG	6 AWG-8 AWG	•
L438B	Cu	Cu	Gray	1.91	0.59	3/8	0.25	0.34	0.98	4 AWG	4 AWG-6 AWG	•
L238B	Cu	Cu	Brown	2.07	0.60	3/8	0.32	0.42	1.10	2 AWG	2 AWG-6 AWG	•
L256B	Cu	Cu	Brown	2.07	0.60	5/16	0.32	0.42	1.10	2 AWG	2 AWG-6 AWG	•
L156B	Cu	Cu	Green	2.11	0.67	5/16	0.36	0.47	1.10	1 AWG	1 AWG-6 AWG	•
L1056B	Cu	Cu	Pink	2.25	0.74	5/16	0.39	0.52	1.20	1/0 AWG	1/0 AWG-6 AWG	•
L2038B	Cu	Cu	Black	2.68	0.82	3/8	0.44	0.56	1.38	2/0 AWG	2/0 Awg-4 AWG	•
L3038B	Cu	Cu	Orange	2.76	0.90	3/8	0.49	0.62	1.38	3/0 AWG	3/0 AWG-2 AWG	•
L3048B	Cu	Cu	Orange	2.76	0.90	1/2	0.49	0.62	1.38	3/0 AWG	3/0 AWG-2 AWG	•



COMPRESSION LUGS

L SERIES (CONT'D)

Long Barrel Copper 1-Hole



POLARIS®

SKU	Material	Conductor Type	Color Code	L (IN)	W (IN)	Mounting Bolt Size (IN)	Barrel ID (IN)	Barrel OD (IN)	Barrel Length (B1) (IN)	Wire Range	Expanded Wire Range	Flex Rated
L25038B	Cu	Cu	Yellow	3.03	1.09	3/8	0.59	0.75	1.61	250 MCM	250 MCM-1/0 AWG	•
L25048B	Cu	Cu	Yellow	3.03	1.09	1/2	0.59	0.75	1.61	250 MCM	250 MCM-1/0 AWG	•
L30048B	Cu	Cu	White	3.39	1.19	1/2	0.66	0.82	1.97	300 MCM	300 MCM-2/0 AWG	•
L35058B	Cu	Cu	Red	3.47	1.28	5/8	0.70	0.87	1.97	350 MCM	350 MCM-3/0 AWG	•
L4048B	Cu	Cu	Purple	2.80	1.00	1/2	0.55	0.69	1.42	4/0 AWG	4/0 AWG-1 AWG	•
L50058B	Cu	Cu	Brown	4.13	1.54	5/8	0.84	1.06	2.24	500 MCM	500 MCM-250 MCM	•
L60058B	Cu	Cu	Green	4.25	1.72	5/8	0.93	1.19	2.24	600 MCM	600 MCM-250 MCM	•
L70048B	Cu	Cu	Pink	5.16	1.77	1/2	0.98	1.24	2.64	700 MCM	700 MCM-350 MCM	•
L70058B	Cu	Cu	Pink	5.16	1.77	5/8	0.98	1.24	2.64	700 MCM	700 MCM-350 MCM	•



COMPRESSION LUGS

GL SERIES

Short Barrel Copper 1-Hole with Peep Hole



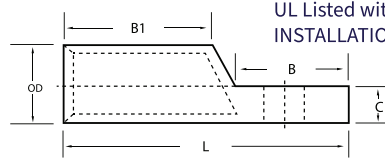
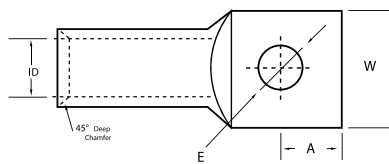
POLARIS[®]

FEATURES

- Produced from high conductivity copper tubing.
- Peep hole allows easy inspection of the termination to assure complete cable insertion.
- Tin-plated to provide corrosion and low contact resistance.
- Marked with die index and color coded.
- Listed for 35KV maximum when properly install applications greater than 2000V, installed to cable manufacturer voltage stress relief instructions.

SPECIFICATIONS

- UL486A Listed Wire Connector.
- UL467 Grounding & Bonding (Sizes 8 AWG - 3/0 AWG).
- cULus Listed 155027.
- Max ampacity is based on NEC 310.15, insulation type, and conductor material. Please consult the current NEC manual.
- * CLASS B OR C BUILDING WIRE CU CABLE ONLY.
- Temperature Rating: 90 °C.
- Voltage: 600V
- 9CU.



*EXPANDED WIRE RANGE when installed with NSI N12ID dieless compression tool.
UL Listed with other tools: FOR TOOL/DIE CRIMPING INFORMATION, PLEASE SEE INSTALLATION INSTRUCTIONS

“*” Indicates Flex Rated to either class K, H, G, I, M, DLO see product drawing or consult customer service for details.

SKU	Material	Conductor Type	Color Code	L (IN)	W (IN)	Mounting Bolt Size (IN)	Barrel ID (IN)	Barrel OD (IN)	Barrel Length (B1) (IN)	Wire Range	Expanded Wire Range	Flex Rated
GL810	Cu	Cu	Red	1.20	0.42	#10 (3/16)	0.17	0.27	0.49	8 AWG	8 AWG	•
GL814	Cu	Cu	Red	1.20	0.42	1/4	0.17	0.27	0.49	8 AWG	8 AWG	•
GL814-B	Cu	Cu	Red	1.20	0.42	1/4	0.17	0.27	0.44	8 AWG	8 AWG	•
GL838	Cu	Cu	Red	1.20	0.42	3/8	0.17	0.27	0.49	8 AWG	8 AWG	•
GL856	Cu	Cu	Red	1.20	0.42	5/16	0.17	0.27	0.49	8 AWG	8 AWG	•
GL614	Cu	Cu	Blue	1.50	0.42	1/4	0.21	0.30	0.71	6 AWG	6 AWG - 8 AWG	•
GL638	Cu	Cu	Blue	1.50	0.49	3/8	0.21	0.30	0.71	6 AWG	6 AWG - 8 AWG	•
GL656	Cu	Cu	Blue	1.50	0.49	5/16	0.21	0.30	0.71	6 AWG	6 AWG - 8 AWG	•
GL414	Cu	Cu	Gray	1.50	0.49	1/4	0.25	0.34	0.71	4 AWG	4 AWG - 6 AWG	•
GL414-B	Cu	Cu	Gray	1.50	0.49	1/4	0.25	0.34	0.71	4 AWG	4 AWG-6 AWG	•
GL438	Cu	Cu	Gray	1.50	0.56	3/8	0.25	0.34	0.71	4 AWG	4 AWG - 6 AWG	•
GL456	Cu	Cu	Gray	1.50	0.49	5/16	0.25	0.34	0.71	4 AWG	4 AWG - 6 AWG	•
GL338	Cu	Cu	White	1.98	0.59	3/8	0.28	0.38	0.83	300 MCM	300 MCM - 2/0 AWG	•
GL214	Cu	Cu	Brown	1.80	0.60	1/4	0.32	0.42	0.83	2 AWG	2 AWG - 6 AWG	•
GL256	Cu	Cu	Brown	1.80	0.60	5/16	0.32	0.42	0.83	2 AWG	2 AWG - 6 AWG	•
GL238	Cu	Cu	Brown	1.80	0.60	3/8	0.32	0.42	0.83	2 AWG	2 AWG - 6 AWG	•
GL114	Cu	Cu	Green	1.84	0.67	1/4	0.36	0.47	0.83	1 AWG	1 AWG - 6 AWG	•
GL156	Cu	Cu	Green	1.84	0.67	5/16	0.36	0.47	0.83	1 AWG	1 AWG - 6 AWG	•
GL138	Cu	Cu	Green	1.84	0.67	3/8	0.36	0.47	0.83	1 AWG	1 AWG - 6 AWG	•
GL256-B	Cu	Cu	Brown	2.24	0.82	5/16	0.32	0.42	0.83	2 AWG	2 AWG-6 AWG	•
GL1056	Cu	Cu	Pink	1.84	0.74	5/16	0.39	0.52	0.83	1/0 AWG	1/0 AWG - 6 AWG	•
GL1038	Cu	Cu	Pink	1.84	0.74	3/8	0.39	0.52	0.83	1/0 AWG	1/0 AWG - 6 AWG	•
GL1038-B	Cu	Cu	Pink	1.84	0.74	3/8	0.39	0.52	0.83	1/0 AWG	1/0 AWG-6 AWG	•
GL1048	Cu	Cu	Pink	1.84	0.74	1/2	0.39	0.52	0.83	1/0 AWG	1/0 AWG - 6 AWG	•
GL2056	Cu	Cu	Black	2.24	0.82	5/16	0.44	0.56	0.94	2/0 AWG	2/0 AWG - 4 AWG	•
GL2038	Cu	Cu	Black	2.24	0.82	3/8	0.44	0.56	0.94	2/0 AWG	2/0 AWG - 4 AWG	•
GL2048	Cu	Cu	Black	2.24	0.82	1/2	0.44	0.56	0.94	2/0 AWG	2/0 AWG - 4 AWG	•
GL3038	Cu	Cu	Orange	2.36	0.90	3/8	0.49	0.62	0.98	3/0 AWG	3/0 AWG - 2 AWG	•
GL3048	Cu	Cu	Orange	2.36	0.90	1/2	0.49	0.62	0.98	3/0 AWG	3/0 AWG - 2 AWG	•
GL4038	Cu	Cu	Purple	2.36	1.00	3/8	0.55	0.69	0.98	4/0 AWG	4/0 AWG - 1 AWG	•



COMPRESSION LUGS

GL SERIES (CONT'D)

Short Barrel Copper 1-Hole with Peep Hole



POLARIS[®]

SKU	Material	Conductor Type	Color Code	L (IN)	W (IN)	Mounting Bolt Size (IN)	Barrel ID (IN)	Barrel OD (IN)	Barrel Length (B1) (IN)	Wire Range	Expanded Wire Range	Flex Rated
GL4048	Cu	Cu	Purple	2.36	1.00	1/2	0.55	0.69	0.98	4/0 AWG	4/0 AWG - 1 AWG	•
GL25038	Cu	Cu	Yellow	2.48	1.09	3/8	0.59	0.75	1.06	250 MCM	250 MCM - 1/0 AWG	•
GL25048	Cu	Cu	Yellow	2.48	1.09	1/2	0.59	0.75	1.06	250 MCM	250 MCM - 1/0 AWG	•
GL30048	Cu	Cu	White	2.48	1.19	1/2	0.66	0.82	1.06	300 MCM	300 MCM - 2/0 AWG	•
GL35038	Cu	Cu	Red	1.63	1.28	3/8	0.70	0.87	1.10	350 MCM	350 MCM - 3/0 AWG	•
GL35048	Cu	Cu	Red	2.61	1.28	1/2	0.70	0.87	1.10	350 MCM	350 MCM - 3/0 AWG	•
GL40048	Cu	Cu	Blue	3.08	1.39	1/2	0.76	0.95	1.18	400 MCM	400 MCM - 4/0 AWG	•
GL50048	Cu	Cu	Brown	3.28	1.54	1/2	0.84	1.06	1.38	500 MCM	500 MCM - 250 MCM	•
GL50058	Cu	Cu	Brown	3.28	1.54	5/8	0.84	1.06	1.38	500 MCM	500 MCM - 250 MCM	•
GL60048	Cu	Cu	Green	3.50	1.72	1/2	0.93	1.19	1.50	600 MCM	600 MCM - 250 MCM	•
GL60058	Cu	Cu	Green	3.50	1.72	5/8	0.93	1.19	1.50	600 MCM	600 MCM - 250 MCM	•
GL75048	Cu	Cu	Black	3.87	1.76	1/2	1.04	1.31	1.85	750 MCM	750 MCM - 500 MCM	•
GL75058	Cu	Cu	Black	4.37	1.90	5/8	1.04	1.31	1.85	750 MCM	750 MCM - 500 MCM	•
GL6N-141	Cu	Cu	Blue	2.09	0.42	1/4	0.21	0.30	0.71	6 AWG	6 AWG - 8 AWG	•
GL6N-143	Cu	Cu	Blue	2.64	0.42	1/4	0.21	0.30	0.71	6 AWG	6 AWG - 8 AWG	•
GL6N-38	Cu	Cu	Blue	2.64	0.57	3/8	0.21	0.30	0.71	6 AWG	6 AWG - 8 AWG	•
GL4N-141	Cu	Cu	Gray	2.09	0.49	1/4	0.25	0.34	0.71	4 AWG	4 AWG - 6 AWG	•
GL4N-38	Cu	Cu	Gray	2.68	0.57	3/8	0.25	0.34	0.75	4 AWG	4 AWG - 6 AWG	•
GL2N-141	Cu	Cu	Brown	2.28	0.60	1/4	0.32	0.42	0.83	2 AWG	2 AWG - 6 AWG	•
GL2N-142	Cu	Cu	Brown	2.36	0.60	1/4	0.32	0.42	0.83	2 AWG	2 AWG - 6 AWG	•
GL2N-143	Cu	Cu	Brown	2.80	0.60	1/4	0.32	0.42	0.83	2 AWG	2 AWG - 6 AWG	•
GL2N-38	Cu	Cu	Brown	2.84	0.60	3/8	0.32	0.42	0.83	2 AWG	2 AWG - 6 AWG	•
GL1N-38	Cu	Cu	Green	3.02	0.74	3/8	0.39	0.52	0.83	1 AWG	1 AWG - 6 AWG	•
GL10N-38	Cu	Cu	Pink	2.84	0.74	3/8	0.39	0.52	0.83	1/0 AWG	1/0 AWG - 6 AWG	•
GL20N	Cu	Cu	Black	4.17	0.81	1/2	0.44	0.56	0.94	2/0 AWG	2/0 AWG - 4 AWG	•
GL20N-38	Cu	Cu	Black	2.99	0.81	3/8	0.44	0.56	0.94	2/0 AWG	2/0 AWG - 4 AWG	•
GL30N	Cu	Cu	Orange	4.29	0.90	1/2	0.49	0.62	0.98	3/0 AWG	3/0 AWG - 2 AWG	•
GL30N-38	Cu	Cu	Orange	3.11	0.90	3/8	0.49	0.62	0.98	3/0 AWG	3/0 AWG - 2 AWG	•
GL40N	Cu	Cu	Purple	4.29	1.00	1/2	0.55	0.69	0.98	4/0 AWG	4/0 AWG - 1 AWG	•
GL40N-38	Cu	Cu	Purple	3.11	1.00	3/8	0.55	0.69	0.98	4/0 AWG	4/0 AWG - 1 AWG	•
GL250N	Cu	Cu	Yellow	4.41	1.09	1/2	0.59	0.75	1.06	250 MCM	250 MCM - 1/0 AWG	•
GL250N-38	Cu	Cu	Yellow	3.23	1.09	3/8	0.59	0.75	1.06	250 MCM	250 MCM - 1/0 AWG	•
GL350N	Cu	Cu	Red	4.52	1.28	1/2	0.70	0.87	1.10	350 MCM	350 MCM - 3/0 AWG	•
GL350N-38	Cu	Cu	Red	3.35	1.28	3/8	0.70	0.87	1.10	350 MCM	350 MCM - 3/0 AWG	•
GL400N	Cu	Cu	Blue	4.69	1.39	1/2	0.76	0.95	1.18	400 MCM	400 MCM - 4/0 AWG	•
GL500N	Cu	Cu	Brown	4.88	1.54	1/2	0.84	1.06	1.38	500 MCM	500 MCM - 250 MCM	•
GL500N-38	Cu	Cu	Brown	3.70	1.54	3/8	0.84	1.06	1.38	500 MCM	500 MCM - 250 MCM	•
GL600N	Cu	Cu	Green	5.04	1.72	1/2	0.93	1.19	1.50	600 MCM	600 MCM - 250 MCM	•
GL750N	Cu	Cu	Black	5.51	1.9	1/2	1.04	1.31	1.85	750 MCM	750 MCM - 500 MCM	•
GL156B	Cu	Cu	Green	1.83	0.67	5/16	0.36	0.47	0.83	1 AWG	1 AWG-6 AWG	•
GL214B	Cu	Cu	Brown	1.80	0.60	1/4	0.32	0.42	0.83	2 AWG	2 AWG - 6 AWG	•
GL256B	Cu	Cu	Brown	1.80	0.60	5/16	0.32	0.42	0.83	2 AWG	2 AWG-6 AWG	•
GL1056B	Cu	Cu	Pink	1.83	0.74	5/16	0.39	0.52	0.83	1/0 AWG	1/0 AWG-6 AWG	•
GL2038B	Cu	Cu	Black	2.24	0.81	3/8	0.44	0.56	0.94	2/0 AWG	2/0 AWG-4 AWG	•
GL3038B	Cu	Cu	Orange	2.36	0.90	3/8	0.49	0.62	0.98	3/0 AWG	3/0 AWG -2 AWG	•
GL3048B	Cu	Cu	Orange	2.36	0.90	1/2	0.49	0.62	0.98	3/0 AWG	3/0 AWG -2 AWG	•



COMPRESSION LUGS

GL SERIES (CONT'D)

Short Barrel Copper 1-Hole with Peep Hole



POLARIS®

SKU	Material	Conductor Type	Color Code	L (IN)	W (IN)	Mounting Bolt Size (IN)	Barrel ID (IN)	Barrel OD (IN)	Barrel Length (B1) (IN)	Wire Range	Expanded Wire Range	Flex Rated
GL4048B	Cu	Cu	Purple	2.36	1.00	1/2	0.55	0.69	0.98	4/0 AWG	4/0 AWG-1 AWG	•
GL25038B	Cu	Cu	Yellow	2.48	1.09	3/8	0.59	0.75	1.06	250 MCM	250 MCM-1/0 AWG	•
GL25048B	Cu	Cu	Yellow	2.48	1.09	1/2	0.59	0.75	1.06	250 MCM	250 MCM-1/0 AWG	•
GL30048B	Cu	Cu	White	2.48	1.19	1/2	0.66	0.82	1.06	300 MCM	300 MCM-2/0 AWG	•
GL35058B	Cu	Cu	Red	2.48	1.28	5/8	0.70	0.88	1.10	350 MCM	350 MCM-3/0 AWG	•
GL50058B	Cu	Cu	Brown	3.28	1.54	5/8	0.84	1.06	1.38	500 MCM	500 MCM-250 MCM	•
GL60058B	Cu	Cu	Green	3.50	1.72	5/8	0.93	1.19	1.50	600 MCM	600 MCM-250 MCM	•
GL75058B	Cu	Cu	Black	4.37	1.90	5/8	1.04	1.31	1.85	750 MCM	750 MCM-500 MCM	•
GL10058B	Cu	Cu	White	4.43	1.90	5/8	1.19	1.53	1.91	1000 MCM	1000 MCM-750 MCM	•
GL30NB	Cu	Cu	Orange	4.29	0.90	1/2	0.49	0.62	0.98	3/0 AWG	3/0 AWG -2 AWG	•
GL250NB	Cu	Cu	Yellow	4.41	1.09	1/2	0.59	0.75	1.06	250 MCM	250 MCM-1/0 AWG	•
GL300NB	Cu	Cu	White	4.53	1.19	1/2	0.66	0.81	1.06	300 MCM	300 MCM-2/0 AWG	•
GL350NB	Cu	Cu	Red	4.53	1.28	1/2	0.70	0.87	1.10	350 MCM	350 MCM-3/0 AWG	•
GL500NB	Cu	Cu	Brown	4.88	1.54	1/2	0.84	1.06	1.38	500 MCM	500 MCM-250 MCM	•
GL600NB	Cu	Cu	Green	5.04	1.72	1/2	0.93	1.19	1.50	600 MCM	600 MCM-250 MCM	•
GL700NB	Cu	Cu	Pink	5.67	1.72	1/2	0.98	1.24	1.85	700 MCM	700 MCM-350 MCM	•
GL70058B	Cu	Cu	Pink	4.37	1.78	5/8	0.98	1.24	1.85	700 MCM	700 MCM-350 MCM	•



COMPRESSION LUGS

SL-N SERIES

Long Barrel Stacking Copper



POLARIS[®]

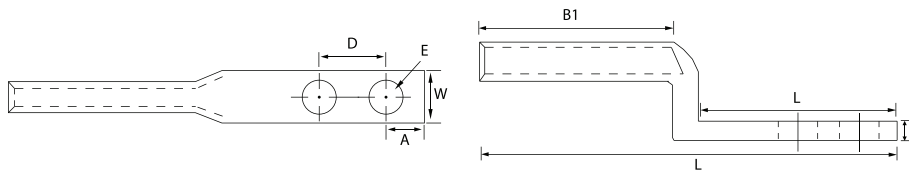
FEATURES

- Designed for use with the L-N Series.
- Produced from high conductivity copper tubing for Heavy duty applications.
- Tin-Plated to provide corrosion resistance.
- Marked with die index and color coded.
- For use with LN Series.
- Listed for 35KV maximum when properly installed.

SPECIFICATIONS

- UL486A Listed Wire Connector.
- Max ampacity is based on NEC 310.15, insulation type, and conductor material. Please consult your current NEC manual.
- * CLASS B OR C BUILDING WIRE CU CABLE ONLY.
- Temperature Rating: 90 °C. A9CU.
- Rating: 600V.

*EXPANDED WIRE RANGE when installed with NSI N12ID dieless compression tool. UL Listed with other tools: FOR TOOL/DIE CRIMPING INFORMATION, PLEASE SEE INSTALLATION INSTRUCTIONS



SKU	Wire Range	Expanded Wire Range	Color Code	Bolt Size (IN)	MTG Hole Spacing	L (IN)	W (IN)	End to center (A) (IN)	Tang Length (B) (IN)	Barrel Length (B1) (IN)
SL40N	4/0 AWG	4/0 - 1 AWG	Purple	0.50	1.75	5.17	1.00	0.64	2.86	2.03
SL250N	250 MCM	250 MCM - 1/0 AWG	Yellow	0.50	1.75	5.50	1.16	0.64	2.87	2.22
SL300N	300 MCM	300-2/0 AWG	White	0.50	1.75	5.75	1.16	0.64	2.92	2.48
SL350N	350 MCM	350 MCM - 3/0 AWG	Red	0.50	1.75	6.00	1.27	0.64	2.88	2.58
SL500N	500 MCM	500 - 250 MCM	Brown	0.50	1.75	6.00	1.55	0.64	2.78	2.86
SL600N	600 MCM	600 - 250 MCM	Green	0.50	1.75	6.75	1.70	0.64	2.76	3.46
SL750N	750 MCM	750 - 500 MCM	Black	0.50	1.75	6.75	1.88	0.64	2.85	3.48



COMPRESSION LUGS

L-N SERIES

Long Barrel Copper 2-Hole



POLARIS®

FEATURES

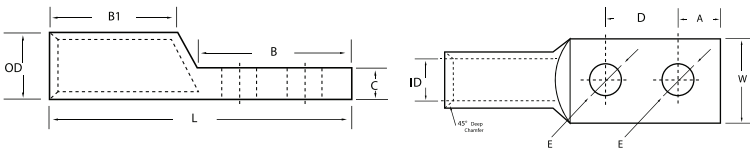
- Produced from high conductivity copper tubing.
- Allows easy inspection of the termination to assure complete cable insertion.
- Tin-plated to provide corrosion and low contact resistance.
- Marked with die index and color coded.
- Listed for 35KV maximum when properly installed.
- For applications greater than 2000V, install to cable Manufacturer voltage stress relief instructions.

SPECIFICATIONS

- UL486A Listed Wire Connector.
- UL467 Grounding & Bonding (Sizes 8 AWG - 3/0 AWG).
- Max ampacity is based on NEC 310.15, insulation type, and conductor material. Please consult the NEC manual.
- * CLASS B OR C BUILDING WIRE CU CABLE ONLY.
- Temperature Rating: 90 °C.
- Voltage: 600V
- 9CU.

Part Numbers ending in “P” have a “peep” or sight inspection hole.

*EXPANDED WIRE RANGE when installed with NSI N12ID dieless compression tool. UL Listed with other tools: FOR TOOL/DIE CRIMPING INFORMATION, PLEASE SEE INSTALLATION INSTRUCTIONS



“•” Indicates Flex Rated to either class K, H, G, I, M, DLO see product drawing or consult customer service for details.

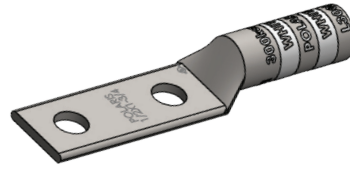
SKU	Material	Conductor Type	Color Code	L (IN)	W (IN)	Mounting Bolt Size (IN)	Mounting Hole Spacing (D) (IN)	Barrel ID (IN)	Barrel OD (IN)	Barrel Length (B1) (IN)	Wire Range	Expanded Wire Range	Flex Rated
L8N-14	Cu	Cu	Red	2.74	0.42	1/4	1.000	0.17	0.27	0.81	8 AWG	8 AWG	•
L8N-14P	Cu	Cu	Red	2.74	0.42	1/4	1.000	0.17	0.27	0.81	8 AWG	8 AWG	•
L8N-141	Cu	Cu	Red	2.19	0.42	1/4	0.625	0.17	0.27	0.81	8 AWG	8 AWG	•
L8N-141P	Cu	Cu	Red	2.19	0.42	1/4	0.625	0.17	0.27	0.81	8 AWG	8 AWG	•
L8N-142	Cu	Cu	Red	2.3	0.42	1/4	0.750	0.17	0.27	0.81	8 AWG	8 AWG	•
L8N-142P	Cu	Cu	Red	2.3	0.42	1/4	0.750	0.17	0.27	0.81	8 AWG	8 AWG	•
L8N-563	Cu	Cu	Red	3.92	0.55	5/16	1.750	0.17	0.27	0.81	8 AWG	8 AWG	•
L8N-563P	Cu	Cu	Red	3.92	0.55	5/16	1.750	0.17	0.27	0.81	8 AWG	8 AWG	•
L6N-12	Cu	Cu	Blue	2.24	0.42	1/4	0.500	0.21	0.3	0.98	6 AWG	6 AWG - 8 AWG	•
L6N-14	Cu	Cu	Blue	2.91	0.43	1/4	1.000	0.21	0.3	0.98	6 AWG	6 AWG - 8 AWG	•
L6N-14P	Cu	Cu	Blue	2.91	0.43	1/4	1.000	0.21	0.3	0.98	6 AWG	6 AWG - 8 AWG	•
L6N-141	Cu	Cu	Blue	2.36	0.42	1/4	0.625	0.21	0.3	0.98	6 AWG	6 AWG - 8 AWG	•
L6N-141P	Cu	Cu	Blue	2.36	0.42	1/4	0.625	0.21	0.3	0.98	6 AWG	6 AWG - 8 AWG	•
L6N-142	Cu	Cu	Blue	2.48	0.42	1/4	0.750	0.21	0.3	0.98	6 AWG	6 AWG - 8 AWG	•
L6N-142P	Cu	Cu	Blue	2.48	0.42	1/4	0.750	0.21	0.3	0.98	6 AWG	6 AWG - 8 AWG	•
L6N-143	Cu	Cu	Blue	2.48	0.42	1/4	0.750	0.21	0.3	0.98	6 AWG	6 AWG - 8 AWG	•
L6N-38	Cu	Cu	Blue	2.91	0.55	3/8	1.000	0.21	0.3	0.98	6 AWG	6 AWG - 8 AWG	•
L6N-38P	Cu	Cu	Blue	2.91	0.55	3/8	1.000	0.21	0.3	0.98	6 AWG	6 AWG - 8 AWG	•
L6N-382	Cu	Cu	Blue	2.72	0.55	3/8	0.750	0.21	0.3	0.98	6 AWG	6 AWG - 8 AWG	•
L6N-382P	Cu	Cu	Blue	2.72	0.55	3/8	0.750	0.21	0.3	0.98	6 AWG	6 AWG - 8 AWG	•
L6N	Cu	Cu	Blue	4.09	0.83	1/2	1.750	0.21	0.3	0.98	6 AWG	6 AWG - 8 AWG	•
L6NP	Cu	Cu	Blue	4.09	0.83	1/2	1.750	0.21	0.3	0.98	6 AWG	6 AWG - 8 AWG	•
L4N	Cu	Cu	Gray	4.09	0.87	1/2	1.750	0.25	0.34	0.98	4 AWG	4 AWG - 6 AWG	•
L4NP	Cu	Cu	Gray	4.09	0.87	1/2	1.750	0.25	0.34	0.98	4 AWG	4 AWG - 6 AWG	•
L4N-14	Cu	Cu	Gray	2.91	0.49	1/4	1.000	0.25	0.34	0.98	4 AWG	4 AWG - 6 AWG	•
L4N-14P	Cu	Cu	Gray	2.91	0.49	1/4	1.000	0.25	0.34	0.98	4 AWG	4 AWG - 6 AWG	•
L4N-141	Cu	Cu	Gray	2.36	0.49	1/4	0.625	0.25	0.34	0.98	4 AWG	4 AWG - 6 AWG	•
L4N-141P	Cu	Cu	Gray	2.36	0.49	1/4	0.625	0.25	0.34	0.98	4 AWG	4 AWG - 6 AWG	•
L4N-142	Cu	Cu	Gray	2.48	0.49	1/4	0.750	0.25	0.34	0.98	4 AWG	4 AWG - 6 AWG	•
L4N-142P	Cu	Cu	Gray	2.48	0.49	1/4	0.750	0.25	0.34	0.98	4 AWG	4 AWG - 6 AWG	•



COMPRESSION LUGS

L-N SERIES (CONT'D)

Long Barrel Copper 2-Hole



POLARIS[®]

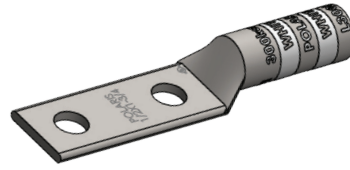
SKU	Material	Conductor Type	Color Code	L (IN)	W (IN)	Mounting Bolt Size (IN)	Mounting Hole Spacing (D) (IN)	Barrel ID (IN)	Barrel OD (IN)	Barrel Length (B1) (IN)	Wire Range	Expanded Wire Range	Flex Rated
L4N-38	Cu	Cu	Gray	2.91	0.55	3/8	1.000	0.25	0.34	0.98	4 AWG	4 AWG - 6 AWG	•
L4N-38P	Cu	Cu	Gray	2.91	0.55	3/8	1.000	0.25	0.34	0.98	4 AWG	4 AWG - 6 AWG	•
L4N-382	Cu	Cu	Gray	2.91	0.55	3/8	0.750	0.25	0.34	0.98	4 AWG	4 AWG - 6 AWG	•
L4N-382P	Cu	Cu	Gray	2.91	0.55	3/8	0.750	0.25	0.34	0.98	4 AWG	4 AWG - 6 AWG	•
L2N-141	Cu	Cu	Brown	2.52	0.6	1/4	0.625	0.32	0.42	1.1	2 AWG	2 AWG - 6 AWG	•
L2N-141P	Cu	Cu	Brown	2.52	0.6	1/4	0.625	0.32	0.42	1.1	2 AWG	2 AWG - 6 AWG	•
L2N-142	Cu	Cu	Brown	2.64	0.6	1/4	0.750	0.32	0.42	1.1	2 AWG	2 AWG - 6 AWG	•
L2N-14	Cu	Cu	Brown	3.07	0.6	1/4	1.000	0.32	0.42	1.1	2 AWG	2 AWG - 6 AWG	•
L2N-14P	Cu	Cu	Brown	3.07	0.6	1/4	1.000	0.32	0.42	1.1	2 AWG	2 AWG - 6 AWG	•
L2N	Cu	Cu	Brown	4.25	0.81	1/2	1.750	0.32	0.42	1.1	2 AWG	2 AWG - 6 AWG	•
L2NP	Cu	Cu	Brown	4.25	0.81	1/2	1.750	0.32	0.42	1.1	2 AWG	2 AWG - 6 AWG	•
L2N-56	Cu	Cu	Brown	2.87	0.6	5/16	0.750	0.32	0.42	1.1	2 AWG	2 AWG - 6 AWG	•
L2N-38	Cu	Cu	Brown	3.07	0.6	3/8	1.000	0.32	0.42	1.1	2 AWG	2 AWG - 6 AWG	•
L2N-38P	Cu	Cu	Brown	3.07	0.6	3/8	1.000	0.32	0.42	1.1	2 AWG	2 AWG - 6 AWG	•
L2N-382	Cu	Cu	Brown	2.87	0.6	3/8	0.750	0.32	0.42	1.1	2 AWG	2 AWG - 6 AWG	•
L2N-382P	Cu	Cu	Brown	2.87	0.6	3/8	0.750	0.32	0.42	1.1	2 AWG	2 AWG - 6 AWG	•
L2N-383	Cu	Cu	Brown	4.25	0.81	3/8	1.750	0.32	0.42	1.1	2 AWG	2 AWG - 6 AWG	•
L2N-383P	Cu	Cu	Brown	4.25	0.81	3/8	1.750	0.32	0.42	1.1	2 AWG	2 AWG - 6 AWG	•
L1N	Cu	Cu	Green	4.29	0.75	1/2	1.750	0.36	0.47	1.1	1 AWG	1 AWG - 6 AWG	•
L1N-38	Cu	Cu	Green	3.07	0.67	3/8	1.000	0.36	0.47	1.1	1 AWG	1 AWG - 6 AWG	•
L1N-141	Cu	Cu	Green	2.56	0.67	1/4	0.630	0.36	0.47	1.1	1 AWG	1 AWG - 6 AWG	•
L10N-14	Cu	Cu	Pink	3.2	0.74	1/4	1.000	0.39	0.52	1.2	1/0 AWG	1/0 AWG-6 AWG	•
L10N-14P	Cu	Cu	Pink	2.66	0.74	1/4	0.625	0.39	0.52	1.2	1/0 AWG	1/0 AWG - 6 AWG	•
L10N	Cu	Cu	Pink	4.39	0.74	1/2	1.750	0.39	0.52	1.2	1/0 AWG	1/0 AWG - 6 AWG	•
L10NP	Cu	Cu	Pink	4.39	0.74	1/2	1.750	0.39	0.52	1.2	1/0 AWG	1/0 AWG - 6 AWG	•
L10N-38	Cu	Cu	Pink	3.21	0.74	3/8	1.000	0.39	0.52	1.2	1/0 AWG	1/0 AWG - 6 AWG	•
L10N-38P	Cu	Cu	Pink	3.21	0.74	3/8	1.000	0.39	0.52	1.2	1/0 AWG	1/0 AWG - 6 AWG	•
L10N-382	Cu	Cu	Pink	3.01	0.74	3/8	0.750	0.39	0.52	1.2	1/0 AWG	1/0 AWG - 6 AWG	•
L10N-382P	Cu	Cu	Pink	3.01	0.74	3/8	0.750	0.39	0.52	1.2	1/0 AWG	1/0 AWG - 6 AWG	•
L10N-383	Cu	Cu	Pink	4.63	0.74	3/8	1.750	0.39	0.52	1.2	1/0 AWG	1/0 AWG - 6 AWG	•
L10N-383P	Cu	Cu	Pink	4.63	0.74	3/8	1.750	0.39	0.52	1.2	1/0 AWG	1/0 AWG - 6 AWG	•
L20N-14	Cu	Cu	Black	3.43	0.81	1/4	1.000	0.44	0.56	1.38	2/0 AWG	2/0 AWG - 4 AWG	•
L20N-14P	Cu	Cu	Black	2.99	0.82	1/4	0.750	0.44	0.56	1.38	2/0 AWG	2/0 AWG - 4 AWG	•
L20N-141	Cu	Cu	Black	2.87	0.81	1/4	0.625	0.44	0.56	1.38	2/0 AWG	2/0 AWG - 4 AWG	•
L20N-141P	Cu	Cu	Black	2.87	0.81	1/4	0.625	0.44	0.56	1.38	2/0 AWG	2/0 AWG - 4 AWG	•
L20N-142	Cu	Cu	Black	2.99	0.82	1/4	0.750	0.44	0.56	1.38	2/0 AWG	2/0 AWG - 4 AWG	•
L20N-38	Cu	Cu	Black	3.43	0.82	3/8	1.000	0.44	0.56	1.38	2/0 AWG	2/0 AWG - 4 AWG	•
L20N-38P	Cu	Cu	Black	3.43	0.82	3/8	1.000	0.44	0.56	1.38	2/0 AWG	2/0 AWG - 4 AWG	•
L20N-383	Cu	Cu	Black	4.61	0.82	3/8	1.750	0.44	0.56	1.38	2/0 AWG	2/0 AWG - 4 AWG	•
L20N-383P	Cu	Cu	Black	4.61	0.82	3/8	1.750	0.44	0.56	1.38	2/0 AWG	2/0 AWG - 4 AWG	•
L20N	Cu	Cu	Black	4.61	0.82	1/2	1.750	0.44	0.56	1.38	2/0 AWG	2/0 AWG - 4 AWG	•
L20NP	Cu	Cu	Black	4.61	0.82	1/2	1.750	0.44	0.56	1.38	2/0 AWG	2/0 AWG - 4 AWG	•
L30N-141	Cu	Cu	Orange	2.95	0.9	1/4	0.625	0.49	0.62	1.38	3/0 AWG	3/0 AWG - 2 AWG	•
L30N-141P	Cu	Cu	Orange	2.95	0.9	1/4	0.625	0.49	0.62	1.38	3/0 AWG	3/0 AWG - 2 AWG	•
L30N-38	Cu	Cu	Orange	3.5	0.9	3/8	1.000	0.49	0.62	1.38	3/0 AWG	3/0 AWG - 2 AWG	•



COMPRESSION LUGS

L-N SERIES (CONT'D)

Long Barrel Copper 2-Hole



POLARIS®

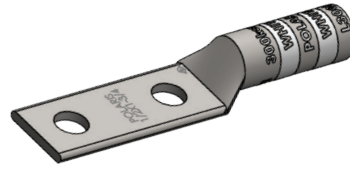
SKU	Material	Conductor Type	Color Code	L (IN)	W (IN)	Mounting Bolt Size (IN)	Mounting Hole Spacing (D) (IN)	Barrel ID (IN)	Barrel OD (IN)	Barrel Length (B1) (IN)	Wire Range	Expanded Wire Range	Flex Rated
L30N-38P	Cu	Cu	Orange	3.5	0.9	3/8	1.000	0.49	0.62	1.38	3/0 AWG	3/0 AWG - 2 AWG	•
L30N-56	Cu	Cu	Orange	3.5	0.9	5/16	1.000	0.49	0.62	1.38	3/0 AWG	3/0 AWG - 2 AWG	•
L30N-56P	Cu	Cu	Orange	3.5	0.9	5/16	1.000	0.49	0.62	1.38	3/0 AWG	3/0 AWG - 2 AWG	•
L30N	Cu	Cu	Orange	4.65	0.9	1/2	1.750	0.49	0.62	1.38	3/0 AWG	3/0 AWG - 2 AWG	•
L30NP	Cu	Cu	Orange	4.65	0.9	1/2	1.750	0.49	0.62	1.38	3/0 AWG	3/0 AWG - 2 AWG	•
L40N-141	Cu	Cu	Purple	2.99	1	1/4	0.625	0.55	0.69	1.42	4/0 AWG	4/0 AWG - 1 AWG	•
L40N-141P	Cu	Cu	Purple	2.99	1	1/4	0.625	0.55	0.69	1.42	4/0 AWG	4/0 AWG - 1 AWG	•
L40N-142	Cu	Cu	Purple	3.1	1	1/4	0.750	0.55	0.69	1.42	4/0 AWG	4/0 AWG - 1 AWG	•
L40N-142P	Cu	Cu	Purple	3.1	1	1/4	0.750	0.55	0.69	1.42	4/0 AWG	4/0 AWG - 1 AWG	•
L40N-38	Cu	Cu	Purple	3.54	1	3/8	1.000	0.55	0.69	1.42	4/0 AWG	4/0 AWG - 1 AWG	•
L40N-38P	Cu	Cu	Purple	3.54	1	3/8	1.000	0.55	0.69	1.42	4/0 AWG	4/0 AWG - 1 AWG	•
L40N-383	Cu	Cu	Purple	4.73	1	3/8	1.750	0.55	0.69	1.42	4/0 AWG	4/0 AWG - 1 AWG	•
L40N-383P	Cu	Cu	Purple	4.73	1	3/8	1.750	0.55	0.69	1.42	4/0 AWG	4/0 AWG - 1 AWG	•
L40N	Cu	Cu	Purple	4.72	1	1/2	1.750	0.55	0.69	1.42	4/0 AWG	4/0 AWG - 1 AWG	•
L40NP	Cu	Cu	Purple	4.72	1	1/2	1.750	0.55	0.69	1.42	4/0 AWG	4/0 AWG - 1 AWG	•
L250N	Cu	Cu	Yellow	4.96	1.09	1/2	1.750	0.59	0.75	1.61	250 MCM	250 MCM - 1/0 AWG	•
L250NP	Cu	Cu	Yellow	4.96	1.09	1/2	1.750	0.59	0.75	1.61	250 MCM	250 MCM - 1/0 AWG	•
L250N-38	Cu	Cu	Yellow	3.78	1.09	3/8	1.000	0.59	0.75	1.61	250 MCM	250 MCM - 1/0 AWG	•
L300N	Cu	Cu	White	5.32	1.19	1/2	1.750	0.66	0.82	1.97	300 MCM	300 MCM - 2/0 AWG	•
L300NP	Cu	Cu	White	5.32	1.19	1/2	1.750	0.66	0.82	1.97	300 MCM	300 MCM - 2/0 AWG	•
L30NB	Cu	Cu	Orange	5.39	1.28	1/2	1.750	0.49	0.62	1.38	3/0 AWG	3/0 AWG - 2 AWG	•
L40NB	Cu	Cu	Purple	5.75	1.54	1/2	1.750	0.55	0.69	1.42	4/0 AWG	4/0 AWG - 1 AWG	•
L250NB	Cu	Cu	Yellow	5.32	1.19	1/2	1.750	0.59	0.75	1.61	250 MCM	250 MCM - 1/0 AWG	•
L350N	Cu	Cu	Red	5.39	1.28	1/2	1.750	0.7	0.87	1.97	350 MCM	350 MCM - 3/0 AWG	•
L350NP	Cu	Cu	Red	5.39	1.28	1/2	1.750	0.7	0.87	1.97	350 MCM	350 MCM - 3/0 AWG	•
L350N-38	Cu	Cu	Red	4.21	1.28	3/8	1.000	0.7	0.87	1.97	350 MCM	350 MCM - 3/0 AWG	•
L400N	Cu	Cu	Blue	5.47	1.39	1/2	1.750	0.76	0.95	1.97	400 MCM	400 MCM - 4/0 AWG	•
L400NP	Cu	Cu	Blue	5.47	1.39	1/2	1.750	0.76	0.95	1.97	400 MCM	400 MCM - 4/0 AWG	•
L500N	Cu	Cu	Brown	5.75	1.54	1/2	1.750	0.84	1.06	2.24	500 MCM	500 MCM - 250 MCM	•
L500NP	Cu	Cu	Brown	5.75	1.54	1/2	1.750	0.84	1.06	2.24	500 MCM	500 MCM - 250 MCM	•
L500N-38	Cu	Cu	Brown	4.57	1.54	3/8	1.000	0.84	1.06	2.24	500 MCM	500 MCM - 250 MCM	•
L600N	Cu	Cu	Green	5.79	1.72	1/2	1.750	0.93	1.19	2.24	600 MCM	600 MCM - 250 MCM	•
L600NP	Cu	Cu	Green	5.79	1.72	1/2	1.750	0.93	1.19	2.24	600 MCM	600 MCM - 250 MCM	•
L600N-38	Cu	Cu	Green	4.61	1.72	3/8	1.000	0.93	1.19	2.24	600 MCM	600 MCM - 250 MCM	•
L700N	Cu	Cu	Pink	6.3	1.77	1/2	1.750	0.98	1.24	2.64	700 MCM	700 MCM - 350 MCM	•
L700NP	Cu	Cu	Pink	6.3	1.77	1/2	1.750	0.98	1.24	2.64	700 MCM	700 MCM - 350 MCM	•
L750N	Cu	Cu	Black	6.3	1.9	1/2	1.750	1.04	1.31	2.64	750 MCM	750 MCM - 500 MCM	•
L750NP	Cu	Cu	Black	6.3	1.9	1/2	1.750	1.04	1.31	2.64	750 MCM	750 MCM - 500 MCM	•
L750N-38	Cu	Cu	Black	5.12	1.9	3/8	1.000	1.04	1.31	2.64	750 MCM	750 MCM - 500 MCM	•
L75048	Cu	Cu	Black	5.16	1.9	1/2	1.000	1.04	1.31	2.64	750 MCM	750 MCM - 500 MCM	•
L75058	Cu	Cu	Black	5.16	1.9	5/8	1.000	1.04	1.31	2.64	750 MCM	750 MCM - 500 MCM	•
L1000N	Cu	Cu	White	6.81	2.18	1/2	1.750	1.19	1.53	3.15	1000 MCM	1000 MCM - 750 MCM	•
L1000NP	Cu	Cu	White	6.81	2.18	1/2	1.750	1.19	1.53	3.15	1000 MCM	1000 MCM - 750 MCM	•
L30NB	Cu	Cu	Orange	5.39	1.28	1/2	1.750	0.49	0.62	1.38	3/0 AWG	3/0 AWG - 2 AWG	•
L250NB	Cu	Cu	Yellow	5.32	1.19	1/2	1.750	0.59	0.75	1.61	250 MCM	250 MCM - 1/0 AWG	•



COMPRESSION LUGS

L-N SERIES (CONT'D)

Long Barrel Copper 2-Hole



POLARIS[®]

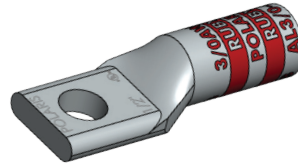
SKU	Material	Conductor Type	Color Code	L (IN)	W (IN)	Mounting Bolt Size (IN)	Mounting Hole Spacing (D) (IN)	Barrel ID (IN)	Barrel OD (IN)	Barrel Length (B1) (IN)	Wire Range	Expanded Wire Range	Flex Rated
L350NB	Cu	Cu	Red	4.72	1	1/2	1.750	0.7	0.87	1.97	350 MCM	350 MCM - 3/0 AWG	•
L500NB	Cu	Cu	Brown	5.79	1.72	1/2	1.750	0.84	1.06	2.24	500 MCM	500 MCM - 250 MCM	•
L600NB	Cu	Cu	Green	6.3	1.77	1/2	1.750	0.92	1.19	2.24	600 MCM	600 MCM - 250 MCM	•
L700NB	Cu	Cu	Pink	6.3	1.9	1/2	1.750	0.98	1.24	2.64	700 MCM	700 MCM - 350 MCM	•
L750NB	Cu	Cu	Black	6.3	1.9	1/2	1.750	1.04	1.31	2.64	750 MCM	750 MCM - 500 MCM	•
L100NB	Cu	Cu	White	4.96	1.09	1/2	1.750	1.19	1.53	3.15	1000 MCM	1000 MCM - 750 MCM	•



COMPRESSION LUGS

AL SERIES

Aluminum 1-Hole Standard Barrel



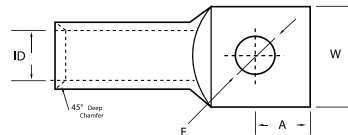
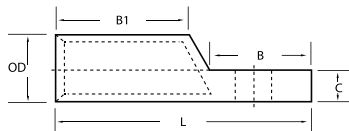
POLARIS®

FEATURES

- Produced from high conductivity aluminum tubing.
- Electro-tin plated for corrosion resistance.
- Color coded and marked with die index information.
- Pre-filled with oxide inhibitor and capped with color coded cap.
- Listed for 35KV maximum when properly installed to cable manufacturers specifications.

SPECIFICATIONS

- cULus Listed for Wire Connector.
- UL486A/B Listed for Wire Connector.
- UL Listed to 35kV when properly installed to cable manufacturers specifications.
- Temperature Rating: 90 °C. AL9CU
- Crimp Tool: N1240, N121D.
- Voltage: 600V max. (2000V max. per UL486B)



“*” Indicates Flex Rated to either class K, H, G, I, M, DLO see product drawing or consult customer service for details.

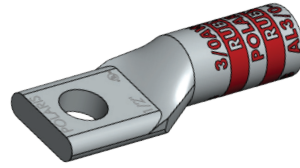
SKU	Material	Conductor Type	Color Code	Mounting Bolt Size (IN)	L (IN)	W (IN)	Barrel ID (IN)	Barrel OD (IN)	Barrel Length (B1) (IN)	Wire Range	Expanded Wire Range	Flex Rated
AL8-14	Al	Cu, Al	Blue	1/4	1.55	0.63	0.18	0.3	0.56	8 AWG	8 AWG	•
AL6-14	Al	Cu, Al	Gray	1/4	2.01	0.57	0.2	0.34	0.86	6 AWG	6 AWG - 8 AWG	•
AL4-14	Al	Cu, Al	Green	1/4	2.31	0.57	0.25	0.44	1.1	4 AWG	4 AWG - 6 AWG	•
AL4-38	Al	Cu, Al	Green	3/8	2.39	0.65	0.25	0.44	1.1	4 AWG	4 AWG - 6 AWG	•
AL2-14	Al	Cu, Al	Pink	1/4	2.5	0.71	0.31	0.53	1.2	2 AWG	2 AWG - 6 AWG	•
AL2-38	Al	Cu, Al	Pink	3/8	2.5	0.71	0.31	0.53	1.2	2 AWG	2 AWG - 6 AWG	•
AL1-14	Al	Cu, Al	Gold	1/4	2.5	0.73	0.35	0.53	1.2	1 AWG	1 AWG - 6 AWG	•
AL1/0-38	Al	Cu, Al	Tan	3/8	2.81	0.85	0.39	0.63	1.2	1/0 AWG	1/0 AWG - 6 AWG	•
AL1/0-48	Al	Cu, Al	Tan	3/8	2.81	0.85	0.39	0.63	1.2	1/0 AWG	1/0 AWG - 6 AWG	•
AL2/0-38	Al	Cu, Al	Olive	3/8	2.81	0.94	0.44	0.69	1.3	2/0 AWG	2/0 AWG - 4 AWG	•
AL2/0-48	Al	Cu, Al	Olive	1/2	2.81	0.94	0.44	0.69	1.3	2/0 AWG	2/0 AWG - 4 AWG	•
AL3/0-38	Al	Cu, Al	Ruby	3/8	3	1.03	0.48	0.76	1.4	3/0 AWG	3/0 AWG - 2 AWG	•
AL3/0-48	Al	Cu, Al	Ruby	1/2	3	1.03	0.48	0.76	1.4	3/0 AWG	3/0 AWG - 2 AWG	•
AL4/0-38	Al	Cu, Al	White	3/8	3.43	1.15	0.55	0.84	1.4	4/0 AWG	4/0 AWG - 1 AWG	•
AL4/0-48	Al	Cu, Al	White	1/2	3.43	1.15	0.55	0.84	1.4	4/0 AWG	4/0 AWG - 1 AWG	•
AL250-48	Al	Cu, Al	Red	1/2	3.5	1.26	0.59	0.92	1.5	250 MCM	250 MCM - 1/0 AWG	•
AL300-48	Al	Cu, Al	Blue	1/2	4	1.37	0.65	1.01	1.6	300 MCM	300 MCM - 2/0 AWG	•
AL350-48	Al	Cu, Al	Brown	1/2	4.25	1.52	0.72	1.12	1.9	350 MCM	350 MCM - 3/0 AWG	•
AL400-48	Al	Cu, Al	Green	1/2	4.68	1.61	0.76	1.19	2.3	400 MCM	400 MCM - 4/0 AWG	•
AL500-48	Al	Cu, Al	Pink	1/2	4.75	1.79	0.84	1.32	2.5	500 MCM	500 MCM - 250 MCM	•
AL500-58	Al	Cu, Al	Pink	5/8	4.75	1.79	0.84	1.32	2.5	500 MCM	500 MCM - 250 MCM	•
AL600-48	Al	Cu, Al	Black	1/2	5.12	1.96	0.92	1.44	2.6	600 MCM	600 MCM - 250 MCM	•
AL600-58	Al	Cu, Al	Black	5/8	5.12	1.96	0.92	1.44	2.6	600 MCM	600 MCM - 250 MCM	•
AL750-48	Al	Cu, Al	Yellow	1/2	6.12	2.19	1.03	1.6	3.2	750 MCM	750 MCM - 500 MCM	•
AL750-58	Al	Cu, Al	Yellow	5/8	6.12	2.19	1.03	1.6	3.2	750 MCM	750 MCM - 500 MCM	•
AL1000-58	Al	Cu, Al	Brown	5/8	6.12	2.5	1.17	1.83	3.2	1000 MCM	1000 MCM - 750 MCM	•
AL1/0N	Al	Cu, Al	Tan	1/2	4.75	0.85	0.39	0.63	1.2	1/0 AWG	1/0 AWG - 6 AWG	•
AL1000N	Al	Cu, Al	Brown	1/2	7.87	2.5	1.17	1.83	3.62	1000 MCM	1000 MCM - 750 MCM	•
AL2/0N	Al	Cu, Al	Olive	1/2	4.8	0.94	0.44	0.69	1.3	2/0 AWG	2/0 AWG - 4 AWG	•
AL250N	Al	Cu, Al	Red	1/2	5.31	1.26	0.59	0.92	1.5	250 MCM	250 MCM - 1/0 AWG	•



COMPRESSION LUGS

AL SERIES (CONT'D)

Aluminum 1-Hole Standard Barrel



POLARIS®

SKU	Material	Conductor Type	Color Code	Mounting Bolt Size (IN)	L (IN)	W (IN)	Barrel ID (IN)	Barrel OD (IN)	Barrel Length (B1) (IN)	Wire Range	Expanded Wire Range	Flex Rated
AL3/0N	Al	Cu, Al	Ruby	1/2	5	1.03	0.48	0.76	1.4	3/0 AWG	3/0 AWG - 2 AWG	•
AL300N	Al	Cu, Al	Blue	1/2	5.5	1.37	0.65	1.01	1.6	300 MCM	300 MCM - 2 /0 AWG	•
AL350N	Al	Cu, Al	Brown	1/2	5.87	1.52	0.72	1.12	1.9	350 MCM	350 MCM - 3 /0 AWG	•
AL4/0N	Al	Cu, Al	White	1/2	5.25	1.15	0.55	0.84	1.4	4/0 AWG	4/0 AWG - 1 AWG	•
AL400N	Al	Cu, Al	Green	1/2	6.43	1.61	0.76	1.19	2.3	400 MCM	400 MCM - 4/0 AWG	•
AL500N	Al	Cu, Al	Pink	1/2	6.5	1.79	0.84	1.32	2.5	500 MCM	500 MCM - 250 MCM	•
AL600N	Al	Cu, Al	Black	1/2	6.75	1.96	0.92	1.44	2.6	600 MCM	600 MCM - 250 MCM	•
AL750N	Al	Cu, Al	Yellow	1/2	7.37	2.19	1.03	1.6	3.2	750 MCM	750 MCM - 500 MCM	•
AL350N-NT	Al	Cu, Al	Brown	1/2	5.87	1.08	0.72	1.12	1.9	350 MCM	350 MCM - 3 /0 AWG	•
AL500N-NT	Al	Cu, Al	Pink	1/2	6.5	1.29	0.84	1.32	2.5	500 MCM	500 MCM - 250 MCM	•
AL600N-NT	Al	Cu, Al	Black	1/2	6.75	1.41	0.92	1.44	2.6	600 MCM	600 MCM - 250 MCM	•
AL750N-NT	Al	Cu, Al	Yellow	1/2	7.37	1.44	1.03	1.6	3.2	750 MCM	750 MCM - 500 MCM	•



COMPRESSION LUGS

CAL SERIES

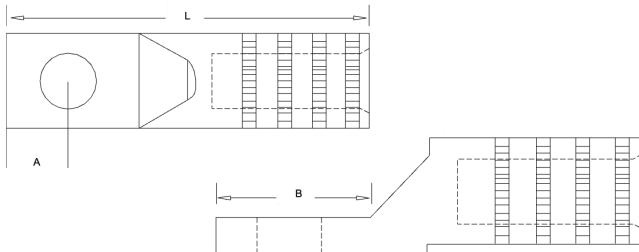
Dual Rated Meter Socket



POLARIS[®]

FEATURES

Made of dead-soft EC grade aluminum.
 840 common dies – one die installs on all sizes. For aluminum or copper conductors. Pre-filled with oxide inhibitor.
 Installing dies (color red): .840, 18, 324, TX, 76, 11A, 249.



SKU	L (IN)	W (IN)	Mounting Bolt Size (IN)	Tang Length B (IN)	Conductor		
					Stranded	Solid	Compact
CAL1-48	3.25	0.904	1/2	1.3125	4	3	4
CAL10	3.25	0.904	3/8	1.3125	2	1	2
CAL2	3.25	0.904	3/8	1.3125	1	3/0	1
CAL20	3.25	0.904	3/8	1.3125	3/0	3/0	3/0
CAL20-48	3.25	0.904	1/2	1.3125	3/0	3/0	3/0
CAL30-48	3.25	0.904	1/2	1.3125	3/0	3/0	3/0
CAL4	3.25	0.904	3/8	1.3125	3/0	3/0	3/0
CAL40	3.25	0.904	3/8	1.3125	3/0	-	3/0
CAL40-48	3.25	0.904	1/2	1.3125	3/0	-	3/0

