

# POLARIS®

## COMPRESSION PINS, SPLICES AND TAPS

### POLARIS MAKES THE CONNECTION

Our compression connectors are the pro's choice for reliability and ease of use. They're compatible with many standard crimp tools and come with clearly legible size markings to save installers time. Plus, we offer a complete range for any application, from power distribution to data centers.



### THE POLARIS DIFFERENCE

#### Improved performance

Experience better conductivity, lower signal loss, and reduced downtime with Polaris connectors.

#### Oxide Inhibitor

Pre-filled with oxide inhibitor to protect against oxidation.

#### Enhanced durability

Our corrosion-resistant connectors withstand the elements, ensuring long-lasting performance.

#### Clear color coding

Each connector is color coded with clear indication of conductor size and crimp location.

#### Simplified installation

Save time and labor with our easy-to-use compression design.

#### UL listed with most major brand tools

Use your favorite crimp tool and die. Polaris connectors are listed for use with tools from most major brands

### MULTIPLE OPTIONS

#### COPPER SPLICES



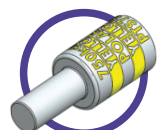
SC, SC-B

#### BI-METALLIC PIN TERMINALS



PT

#### ALUMINUM PIN TERMINAL

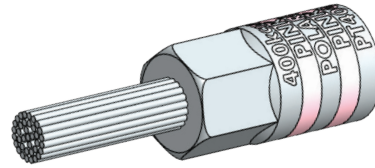


PTS, PTO

# COMPRESSION PINS

## PT SERIES

Bi-Metallic



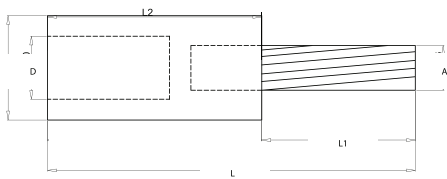
# POLARIS®

### FEATURES

- Designed to facilitate termination of aluminum conductors.
- Pin: Stranded copper, tin plated.
- Supplied with PVC insulating cover.
- Connector bores are coated with oxide inhibitor.

### SPECIFICATIONS

- UL486A/B Listed for Wire Connector.
- Temperature Rating: 90 °C. AL9.
- Crimp Tool: N1240.
- Voltage: 600V max.



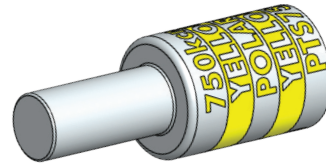
SKU	L (IN)	W (IN)	H (IN)	Material	Conductor Rating	Conductor Type	Die Color Code	Inside Diameter (IN)	Outside Diameter (IN)	Barrel Length (IN)	Wire Range	Pin Size (IN)	Pin Length L1 (IN)	Pin Diameter A (IN)
<b>PT6</b>	2.13	0.64	0.64	Al	AL9CU	Al	Blue	0.18	0.64	1.25		# 8	2.125	0.144
<b>PT4</b>	2.45	0.91	0.64	Al	AL9CU	Al	Orange	0.24	0.64	1.54		# 6	2.450	0.188
<b>PT2</b>	2.45	0.64	0.64	Al	AL9CU	Al	Orange	0.31	0.64	1.54		# 4	2.440	0.228
<b>PT1</b>	2.54	0.64	0.64	Al	AL9CU	Al	Orange	0.35	0.64	1.54		# 3	2.539	0.279
<b>PT1/0</b>	3.41	0.90	0.90	Al	AL9CU	Al	Orange	0.37	0.90	2.14		# 2	3.405	0.287
<b>PT2/0</b>	3.34	0.88	0.88	Al	AL9CU	Al	Red	0.43	0.88	2.09		# 1	3.342	0.322
<b>PT3/0</b>	3.60	0.91	0.91	Al	AL9CU	Al	Red	0.48	0.91	2.14		1/0	3.598	0.362
<b>PT4/0</b>	3.52	0.91	0.91	Al	AL9CU	Al	Red	0.55	0.91	2.06	4/0 AWG	2/0	3.523	0.405
<b>PT250</b>	3.86	1.14	1.14	Al	AL9CU	Al	Brown	0.59	1.14	2.31		3/0	3.858	0.44
<b>PT300</b>	4.09	1.16	1.16	Al	AL9CU	Al	Brown	0.65	1.16	2.39		4/0	4.086	0.523
<b>PT350</b>	4.09	1.16	1.16	Al	AL9CU	Al	Brown	0.70	1.16	2.38		4/0	4.082	0.496
<b>PT400</b>	4.36	1.30	1.30	Al	AL9CU	Al	Pink	0.76	1.30	2.38	400 MCM	250	4.362	0.582
<b>PT500</b>	4.19	1.33	1.33	Al	AL9CU	Al	Pink	0.84	1.33	2.35		350	4.192	0.681
<b>PT600</b>	4.95	1.50	1.50	Al	AL9CU	Al	Yellow	0.92	1.50	3.05		350	4.960	0.688
<b>PT750</b>	5.01	1.48	1.48	Al	AL9CU	Al	Yellow	1.02	1.48	3.01		500	5.007	0.787



# COMPRESSION PINS

## PTS SERIES

Dual Rated Center Pin



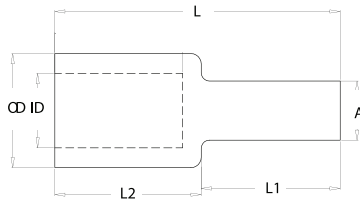
# POLARIS®

### FEATURES

- All-aluminum pin terminal designed for termination of both aluminum and copper conductors.
- The pin is solid aluminum.
- Tin plated to provide low contact resistance and oxidation protection.
- Connector is prefilled with Oxide Inhibitor and capped with color coded cap indicating color of die to use.
- A cover is provided for quick installation.

### SPECIFICATIONS

- UL486A/B Listed for Wire Connector Adapter.
- Temperature Rating: 90 °C, AL9CU
- Crimp Tool: N1240.
- Voltage: 600V max.



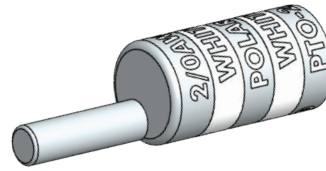
SKU	L (IN)	W (IN)	H (IN)	Material	Conductor Rating	Conductor Type	Die Color Code	Inside Diameter (IN)	Outside Diameter (IN)	Barrel Length (IN)	Wire Range	Pin Size (IN)	Pin Length L1 (IN)	Pin Diameter A (IN)
PTS6	1.85	0.60	0.60	Al	AL9CU	Cu, Al	Tan	0.19	0.60	1.17		4	0.681	0.240
PTS4	1.85	0.60	0.60	Al	AL9CU	Cu, Al	Tan	0.24	0.60	1.17		4	0.681	0.240
PTS2	1.85	0.60	0.60	Al	AL9CU	Cu, Al	Tan	0.30	0.60	1.17		4	0.680	0.240
PTS1	2.01	0.60	0.60	Al	AL9CU	Cu, Al	Tan	0.32	0.60	1.17		3	0.830	0.250
PTS1/0	2.01	0.60	0.60	Al	AL9CU	Cu, Al	Tan	0.37	0.60	1.17		2	0.830	0.290
PTS2/0	2.21	0.85	0.85	Al	AL9CU	Cu, Al	White	0.43	0.85	1.37		1	0.830	0.330
PTS3/0	2.59	0.85	0.85	Al	AL9CU	Cu, Al	White	0.48	0.85	1.37		1/0	1.220	0.370
PTS4/0	2.59	0.85	0.85	Al	AL9CU	Cu, Al	White	0.54	0.85	1.37		2/0	1.220	0.420
PTS250	2.63	1.10	1.10	Al	AL9CU	Cu, Al	Brown	0.60	1.10	1.41		3/0	1.220	0.460
PTS300	2.75	1.10	1.10	Al	AL9CU	Cu, Al	Brown	0.66	1.10	1.41		4/0	1.330	0.530
PTS350	2.75	1.10	1.10	Al	AL9CU	Cu, Al	Brown	0.72	1.10	1.41		250	1.330	0.570
PTS400	3.08	1.31	1.31	Al	AL9CU	Cu, Al	Pink	0.77	1.31	1.48	400 MCM	300	1.590	0.620
PTS500	3.08	1.31	1.31	Al	AL9CU	Cu, Al	Pink	0.84	1.31	1.48	500 MCM	350	1.590	0.680
PTS600	3.67	1.46	1.46	Al	AL9CU	Cu, Al	Yellow	0.92	1.46	2.03		400	1.640	0.720
PTS750	3.79	1.46	1.46	Al	AL9CU	Cu, Al	Yellow	1.03	1.46	2.03		500	1.750	0.810



# COMPRESSION PINS

## PTO SERIES

Dual Rated Offset Pin



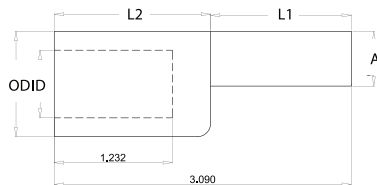
# POLARIS®

### FEATURES

- All-aluminum pin terminal designed for termination of both aluminum and copper conductors.
- Pin is offset for use in tight applications while providing ease of installation in side by side applications.
- The pin is solid aluminum.
- Tin plated to provide low contact resistance and oxidation protection.
- Connector is prefilled with Oxide Inhibitor and capped with color coded cap indicating color of die to use.
- A cover is provided for quick installation.

### SPECIFICATIONS

- UL486A/B Listed for Wire Connector Adapter.
- Temperature Rating: 90 °C, AL9CU
- Crimp Tool: N1240.
- Voltage: 600V max.



SKU	L (IN)	W (IN)	H (IN)	Material	Conductor Rating	Conductor Type	Die Color Code	Inside Diameter (IN)	Outside Diameter (IN)	Barrel Length (IN)	Wire Range	Pin Size (IN)	Pin Length L1 (IN)	Pin Diameter A (IN)
<b>PTO-2/0</b>	2.70	0.85	0.85	Al	AL9CU	Cu, Al	White	0.44	0.85	1.57		1	1.120	0.330
<b>PTO-3/0</b>	2.80	0.85	0.85	Al	AL9CU	Cu, Al	White	0.50	0.85	1.55		1/0	1.250	0.370
<b>PTO-4/0</b>	2.79	0.85	0.85	Al	AL9CU	Cu, Al	White	0.55	0.85	1.51		2/0	1.270	0.420
<b>PTO-250</b>	2.79	1.09	1.09	Al	AL9CU	Cu, Al	Brown	0.59	1.09	1.51		3/0	1.270	0.460
<b>PTO-300</b>	3.09	1.09	1.09	Al	AL9CU	Cu, Al	Brown	0.66	1.09	1.62		4/0	1.460	0.530
<b>PTO-350</b>	3.09	1.09	1.09	Al	AL9CU	Cu, Al	Brown	0.70	1.09	1.62		250	1.460	0.570
<b>PTO-400</b>	3.39	1.31	1.31	Al	AL9CU	Cu, Al	Pink	0.76	1.31	1.70		300	1.680	0.620
<b>PTO-500</b>	3.39	1.31	1.31	Al	AL9CU	Cu, Al	Pink	0.84	1.31	1.70		350	1.680	0.680
<b>PTO-600</b>	4.00	1.46	1.46	Al	AL9CU	Cu, Al	Yellow	0.82	1.46	2.27		400	1.720	0.720
<b>PTO-750</b>	4.19	1.46	1.46	Al	AL9CU	Cu, Al	Yellow	1.03	1.46	2.46		500	1.720	0.810



# COMPRESSION TAPS

## WRD SERIES

Wide Range Tap Connectors



# POLARIS®

### FEATURES

- For combinations of aluminum and aluminum-copper conductors.
- Standard compression tools and dies install all sizes.
- Formable ribs provide broader contact area.
- Fold-in tabs provide positive tab interlock as tool closes.
- Made from high strength aluminum alloy.
- All connectors are reversible.

### SPECIFICATIONS

Voltage 600V.

SKU	Standard Conductor Range						Compact Conductor Range			
	A Groove			B Groove			A Groove		B Groove	
	ACSR	STR	SOL	ACSR2	STR3	SOL4	ACSR5	STR6	ACSR7	STR8
WRD159	-	1.00	-	-	1	-	1	1	1	1
	2.00	2.00	2.00	2	2	2	2	2	2	2
	3.00	3.00	3.00	3	3	3	3	3	3	3
	4.00	4.00	4.00	4	4	4	4	4	4	4
	6.00	6.00	6.00	6	6	6	6	6	6	6
WRD189	-	-	3/0	-	-	1/0	-	-	-	-
	-	2/0	2/0	-	1	1	2/0	2/0	1	1
	1/0	1/0	1/0	2	2	1/0	1/0	2	2	-
	1.00	1.00	1.00	3	3	3	1	1	3	3
	2.00	2.00	-	4	4	4	2	2	4	4
WRD279	-	-	4/0	-	3/0	3/0	-	-	-	-
	-	3/0	3/0	2/0	2/0	2/0	3/0	3/0	3/0	3/0
	2/0	2/0	2/0	1/0	1/0	-	2/0	2/0	2/0	2/0
	1/0	4/0	-	1	-	-	1/0	1/0	1/0	1/0
WRD289	1.00	-	-	-	-	-	-	-	-	-
	-	-	-	-	-	1/0	-	-	-	-
	-	-	-	-	1	1	-	-	1	1
	-	-	4/0	2	2	2	3/0	3/0	2	2
	-	3/0	3/0	3	3	3	2/0	-	3	3
	2/0	2/0	-	4	4	4	-	-	4	4
WRD379	1/0	-	-	6	6	6	-	-	6	6
	-	-	-	-	-	1/0	-	-	-	-
	-	-	-	-	1	1	-	-	1	1
	-	-	-	2	2	2	266-18/1	266	2	2
	4/0	4/0	-	3	3	3	250	250	3	3
WRD399	3/0	-	-	4	4	4	4/0	4/0	4	4
	-	-	-	6	6	6	-	-	6	6
	-	-	-	-	-	3/0	266-18/1	266	-	-
	-	-	-	2/0	2/0	2/0	-	250	-	3/0
WRD419	4/0	4/0	-	1/0	1/0	-	4/0	4/0	2/0	2/0
	3/0	3/0	-	1	-	-	3/0	-	1/0	1/0
	-	-	-	-	-	-	266-18/1	266-18/1	266-18/1	266
	4/0	4/0	-	4/0	4/0	-	-	250	-	250
	3/0	3/0	-	3/0	3/0	-	4/0	4/0	4/0	4/0

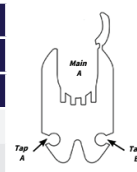


FIGURE 1

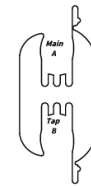


FIGURE 2



FIGURE 3

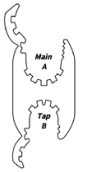


FIGURE 4



# COMPRESSION TAPS

## WRD SERIES (CONT'D)

Wide Range Tap Connectors



# POLARIS®

SKU	Standard Conductor Range						Compact Conductor Range			
	A Groove			B Groove			A Groove		B Groove	
	ACSR	STR	SOL	ACSR2	STR3	SOL4	ACSR5	STR6	ACSR7	STR8
WRD9	-	-	1.00	-	8	8	-	-	-	-
	3.00	2.00	2.00	-	10	10	-	-	-	-
	4.00	3.00	3.00	-	12	12	-	-	-	-
	6.00	4.00	4.00	-	14	14	-	-	-	-
	6.00	-	-	-	-	-	-	-	-	-
WRD139	-	2/0	-	-	-	-	-	-	-	-
	1/0	1/0	-	-	-	-	-	-	-	-
	1.00	1.00	1.00	-	-	6	-	-	-	-
	2.00	2.00	2.00	-	-	-	-	-	-	-
	3.00	3.00	-	-	10	10	-	-	-	-
	4.00	-	-	-	-	-	-	-	-	-
WRD149	-	-	2.00	-	-	2	-	2	-	2
	-	3.00	3.00	-	3	3	-	3	3	3
	4.00	4.00	4.00	4	4	4	4	4	4	4
	6.00	6.00	6.00	6	6	6	6	6	6	6
WRD179	1/0	1/0	-	-	-	2	-	2/0	-	2
	1.00	1.00	1.00	-	3	3	1/0	1/0	-	3
	2.00	2.00	-	4	4	4	1	1	4	4
	3.00	-	-	6	6	6	2	2	6	6
WRD199	1/0	1/0	-	-	1	1	-	2/0	1	1
	1.00	1.00	1.00	2	2	2	1/0	1/0	2	2
	2.00	2.00	-	3	3	-	1	1	3	-
WRD219	3.00	-	-	4	4	-	2	2	4	-
	1/0	1/0	-	1/0	1/0	-	-	2/0	-	2/0
	1.00	1.00	-	1	1	-	1/0	1/0	1/0	1/0
WRD259	-	-	-	2	-	-	-	-	1	-
	-	2/0	-	-	2/0	-	2/0	2/0	2/0	2/0
	1/0	1/0	-	1/0	1/0	-	1/0	1/0	1/0	1/0
WRD299	1.00	-	-	1	-	-	-	-	-	-
	-	3/0	-	-	-	2	3/0	3/0	-	2
	2/0	2/0	-	-	3	3	2/0	-	-	3
	1/0	-	-	4	4	4	-	-	4	4
WRD359	-	-	-	6	6	6	-	-	6	6
	-	-	-	-	1/0	-	-	-	-	-
	4/0	4/0	-	1	1	1	266	266	1/0	1/0
	3/0	3/0	-	2	2	-	-	250	1	1
	-	-	-	3	3	-	4/0	4/0	2	2
WRD369	-	-	-	4	-	-	3/0	-	-	-
	4/0	4/0	-	1/0	1/0	1/0	266	266	1/0	1/0
	3/0	3/0	-	1	1	1	-	250	1	1
	2/0	-	-	2	2	2	4/0	4/0	2	2
	-	-	-	3	3	-	3/0	3/0	3	-
WRD389	-	-	-	4	4	-	-	-	4	-
	-	-	-	-	-	-	266	266	-	-
	4/0	4/0	-	-	3/0	-	-	250	3/0	3/0
	3/0	3/0	-	2/0	2/0	-	4/0	4/0	2/0	-
	-	-	-	1/0	-	-	3/0	-	-	-

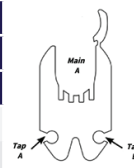


FIGURE 1

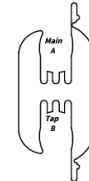


FIGURE 2



FIGURE 3

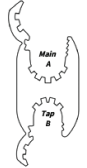


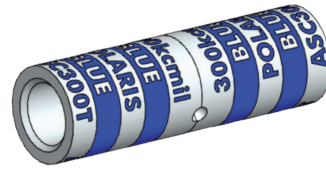
FIGURE 4



# COMPRESSION SPLICES

## ASC-T SERIES

Dual Rated Aluminum



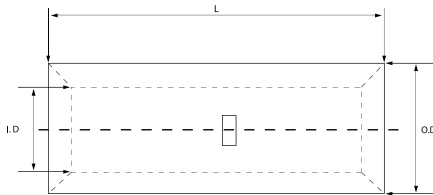
# POLARIS®

### FEATURES

- Produced from high conductivity aluminum tubing.
- Center stop assures proper cable installation.
- Electro-tin plated for corrosion resistance.
- Color coded and marked with die index information.
- Pre-filled with oxide inhibitor and capped with color coded cap.
- Listed for 35KV maximum when properly installed to cable manufacturers specifications.

### SPECIFICATIONS

- cULus Listed for Wire Connector.
- UL486A/B Listed for Wire Connector.
- UL Listed to 35kV when properly installed to cable manufacturers specifications.
- Temperature Rating: 90 °C. AL9CU
- Crimp Tool: N1240, N121D.
- Voltage: 600V max. (2000V max. per UL486B).



“.” Indicates Flex Rated to either class K, H, G, I, M, DLO see product drawing or consult customer service for details.

SKU	Material	Conductor Type	Die Color Code	Splice Inside Diameter (ID) (IN)	Splice Outside Diameter (OD) (IN)	Splice Length (IN)	Wire Range	Expanded Wire Range	Flex Rated
ASC8T	Al	Cu, Al	Blue	0.18	0.30	1.38	8 AWG	8 AWG	•
ASC6T	Al	Cu, Al	Gray	0.20	0.34	1.63	6 AWG	6 AWG - 8 AWG	•
ASC4T	Al	Cu, Al	Green	0.25	0.44	2.00	4 AWG	4 AWG-6 AWG	•
ASC2T	Al	Cu, Al	Pink	0.31	0.53	2.38	2 AWG	2 AWG-6 AWG	•
ASC1T	Al	Cu, Al	Gold	0.35	0.53	2.38	1 AWG	1 AWG-6 AWG	•
ASC1/0T	Al	Cu, Al	Tan	0.39	0.63	2.50	1/0 AWG	1/0 AWG - 6 AWG	•
ASC2/0T	Al	Cu, Al	Olive	0.44	0.69	2.63	2/0 AWG	2/0 AWG-4 AWG	•
ASC3/0T	Al	Cu, Al	Ruby	0.48	0.76	2.88	3/0 AWG	3/0-2 AWG	•
ASC4/0T	Al	Cu, Al	White	0.55	0.84	3.13	4/0 AWG	4/0 AWG - 1 AWG	•
ASC250T	Al	Cu, Al	Red	0.59	0.92	3.25	250 MCM	250 MCM-1/0 AWG	•
ASC300T	Al	Cu, Al	Blue	0.65	1.01	3.25	300 MCM	300 MCM-20 AWG	•
ASC350T	Al	Cu, Al	Brown	0.72	1.12	3.88	350 MCM	350 MCM-3/0 AWG	•
ASC400T	Al	Cu, Al	Green	0.76	1.19	4.88	400 MCM	400 MCM-4/0 AWG	•
ASC500T	Al	Cu, Al	Pink	0.84	1.32	5.00	500 MCM	500-250 MCM	•
ASC600T	Al	Cu, Al	Black	0.92	1.44	5.13	600 MCM	600 MCM-250 MCM	•
ASC750T	Al	Cu, Al	Yellow	1.03	1.60	5.38	750 MCM	750-500 MCM	•
ASC1000T	Al	Cu, Al	Brown	1.17	1.83	5.98	1000 MCM	ASC1000T	•



# COMPRESSION SPLICES

## C SERIES

Copper Long Barrel



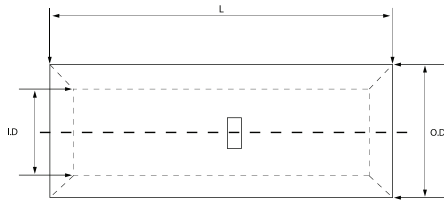
# POLARIS®

### FEATURES

- Produced from high conductivity copper tubing.
- Serrations indicate proper crimp locations.
- Tin-plated to provide corrosion resistance.
- Marked with die index and color coded.
- Suitable for use at voltages up to 35KV provided connector is properly installed to cable manufacturer voltage stress relief instructions.
- 5KV is the maximum voltage in all bare splices.

### SPECIFICATIONS

- UL486A Listed Wire Connector.
- UL467 Grounding & Bonding (Sizes 8 AWG - 3/0 AWG).
- Max ampacity is based on NEC 310.15, insulation type, and conductor material. Please consult the NEC manual.
- \* CLASS B OR C BUILDING WIRE CU CABLE ONLY.
- Temperature Rating: 90 °C.
- Voltage: 600V max.
- 9CU.



\*EXPANDED WIRE RANGE when installed with NSI N12ID dieless compression tool. UL Listed with other tools: FOR TOOL/DIE CRIMPING INFORMATION, PLEASE SEE INSTALLATION INSTRUCTIONS

“\*” Indicates Flex Rated to either class K, H, G, I, M, DLO see product drawing or consult customer service for details.

SKU	Material	Conductor Type	Die Color Code	Splice Inside Diameter (ID) (IN)	Splice Outside Diameter (OD) (IN)	Splice Length (IN)	Wire Range	Expanded Wire Range	Flex Rated
C-8	Cu	Cu	Red	0.17	0.27	1.75	8 AWG	8 AWG	
C-6	Cu	Cu	Blue	0.21	0.30	1.75	6 AWG	6 AWG - 8 AWG	
C-4	Cu	Cu	Gray	0.25	0.34	1.75	4 AWG	4 AWG-6 AWG	
C-3	Cu	Cu	White	0.28	0.38	1.90	3 AWG	3 AWG-6 AWG	•
C-2	Cu	Cu	Brown	0.32	0.42	1.90	2 AWG	2 AWG-6 AWG	
C-1	Cu	Cu	Green	0.36	0.47	2.20	1 AWG	1 AWG-6 AWG	
C-1/0	Cu	Cu	Pink	0.39	0.52	2.20	1/0 AWG	1/0 AWG-6 AWG	
C-2/0	Cu	Cu	Black	0.44	0.56	2.25	2/0 AWG	2/0 AWG-4 AWG	
C-3/0	Cu	Cu	Orange	0.49	0.62	2.25	3/0 AWG	3/0 AWG -2 AWG	•
C-4/0	Cu	Cu	Purple	0.55	0.69	2.75	4/0 AWG	4/0 AWG-1 AWG	•
C-250	Cu	Cu	Yellow	0.59	0.75	3.25	250 MCM	250 MCM-1/0 AWG	•
C-300	Cu	Cu	White	0.66	0.82	3.50	300 MCM	300 MCM-20 AWG	•
C-350	Cu	Cu	Red	0.70	0.87	3.75	350 MCM	350 MCM-3/0 AWG	•
C-400	Cu	Cu	Blue	0.76	0.95	3.75	400 MCM	400 MCM-4/0 AWG	•
C-500	Cu	Cu	Brown	0.84	1.06	4.25	500 MCM	500-250 MCM	•
C-600	Cu	Cu	Green	0.93	1.19	4.50	600 MCM	600 MCM-250 MCM	•
C-750	Cu	Cu	Black	1.04	1.31	4.75	750 MCM	750 MCM-500 MCM	•
C-1000	Cu	Cu	White	1.19	1.53	6.12	1000 MCM	1000 MCM-750 MCM	•

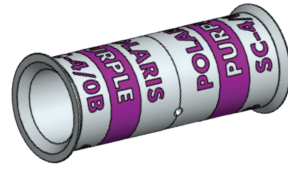




# COMPRESSION SPLICES

## SC-B SERIES

Copper Short Barrel



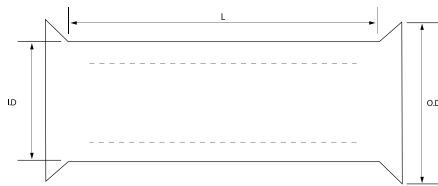
# POLARIS®

### FEATURES

Splice has flared openings at both ends to ensure ease of cable insertion of flexible and extra-flexible cables such as locomotive, welding, mining cable and more.  
Positive center stop.  
Tin-plated for corrosion resistance.

### SPECIFICATIONS

UL486A Listed Wire Connector.  
cULus Listed 155027.  
Temperature Rating: 90 °C.  
Voltage: 600V  
For copper cables only.



“\*” Indicates Flex Rated to either class K, H, G, I, M, DLO see product drawing or consult customer service for details.

SKU	Material	Conductor Type	Die Color Code	Splice Inside Diameter (ID) (IN)	Splice Outside Diameter (OD) (IN)	Splice Length (IN)	Wire Range	Expanded Wire Range	Flex Rated
SC-1B	Cu	Cu	Green	0.36	0.47	1.80	1 AWG	1 AWG-6 AWG	*
SC-1/0B	Cu	Cu	Pink	0.39	0.52	1.60	1/0 AWG	1/0 AWG-6 AWG	*
SC-2/0B	Cu	Cu	Black	0.44	0.56	1.75	2/0 AWG	2/0 AWG-4 AWG	*
SC-3/0B	Cu	Cu	Orange	0.49	0.62	1.75	3/0 AWG	3/0 AWG-2 AWG	*
SC-4/0B	Cu	Cu	Purple	0.55	0.69	1.90	4/0 AWG	4/0 Awg-1 AWG	*
SC-300B	Cu	Cu	White	0.66	0.82	2.10	300 MCM	300 MCM-20 AWG	*



# COMPRESSION SLEEVES

## ISE SERIES

Dual Rated Insulated Service Entrance



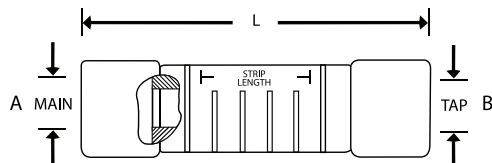
# POLARIS®

### FEATURES

Pre-insulated service entrance compression sleeves for fast and easy installation with standard tools and dies.  
For combinations of aluminum-aluminum and aluminum-copper conductors.  
Solid center barrier.

### SPECIFICATIONS

Meets or exceeds ANSI C119.4.  
Voltage: 600V max.  
Max ampacity is based on NEC 310.15, insulation type, and conductor material. Please consult the NEC manual.



SKU	Die Size (IN)	Tool	A - Conductor Range			B - Conductor Range			L (IN)
			ACSR	AWG (*Compact)	Color Code	ACSR2	AWG	Color Code3	
ISE61	5/8	OD581	-	8 STR-6 SOL	Green	-	8 STR-6 SOL	Green	2.78
ISE62	5/8	OD581	6.00	6 STR-4 SOL	Blue	-	10 STR-8 SOL	Brown	2.78
ISE63	5/8	OD581	6.00	6 STR-4 SOL	Blue	-	8 STR-6 SOL	Green	2.78
ISE64	5/8	OD581	6.00	6 STR-4 SOL	Blue	6	6 STR-4 SOL	Blue	2.78
ISE65	5/8	OD581	4.00	3-4 STR-2 SOL	Orange	-	10 STR-8 SOL	Brown	2.78
ISE66	5/8	OD581	4.00	3-4 STR-2 SOL	Orange	-	8 STR-6 SOL	Green	2.78
ISE67	5/8	OD581	4.00	3-4 STR-2 SOL	Orange	6	6 STR-4 SOL	Blue	2.78
ISE68	5/8	OD581	4.00	3-4 STR-2 SOL	Orange	4	3-4 STR-2 SOL	Orange	2.78
ISE71	5/8	OD581	2.00	1-2 STR	Red	6	6 STR-4 SOL	Blue	2.78
ISE72	5/8	OD581	2.00	1-2 STR	Red	4	3-4 STR-2 SOL	Orange	2.78
ISE73	5/8	OD581	2.00	1-2 STR	Red	2	1-2 STR	Red	2.78
ISE76	5/8	OD581	36526.00	36526	Yellow	4	3-4 STR-2 SOL	Orange	2.78
ISE77	5/8	OD581	36526.00	36526	Yellow	2	1-2 STR	Red	2.78
ISE78	5/8	OD581	36526.00	36526	Yellow	-	1/0 STR	Yellow	2.78
ISE135	0.840	OD581+BY377C	36526.00	1/0, 2/0 STR*	Yellow	2	1-2 STR	Red	5.50
ISE136	0.840	OD581+BY377C	36526.00	1/0, 2/0 STR*	Yellow	36526	1/0 STR, 2/0 COM	Yellow	5.50
ISE144	0.840	OD581+BY377C	36557.00	2/0, 3/0 STR*	Gray	4	3-4 STR-2 SOL	Orange	5.50
ISE145	0.840	OD581+BY377C	36557.00	2/0, 3/0 STR*	Gray	2	1-2 STR	Red	5.50
ISE146	0.840	OD581+BY377C	36557.00	2/0, 3/0 STR*	Gray	36526	1/0 STR, 2/0 COM	Yellow	5.50
ISE147	0.840	OD581+BY377C	36557.00	2/0, 3/0 STR*	Gray	36557	2/0 STR, 3/0 COM	Gray	5.50
ISE154	0.840	OD581+BY377C	36586.00	3/0, 4/0 STR*	Black	4	3-4 STR, 2 SOL	Orange	5.50
ISE155	0.840	OD581+BY377C	36586.00	3/0, 4/0 STR*	Black	2	1-2 STR	Red	5.50
ISE156	0.840	OD581+BY377C	36586.00	3/0, 4/0 STR*	Black	36526	1/0 STR, 2/0 COM	Yellow	5.50
ISE158	0.840	OD581+BY377C	36586.00	3/0, 4/0 STR*	Black	36586	3/0 STR, 4/0 COM	Black	5.50
ISE164	0.840	OD581+BY377C	36617.00	4/0 STR	Pink	4	3-4 STR-2 SOL	Orange	5.50
ISE165	0.840	OD581+BY377C	36617.00	4/0 STR	Pink	2	1-2 STR	Red	5.50
ISE167	0.840	OD581+BY377C	36617.00	4/0 STR	Pink	36557	2/0 STR, 3/0 COM	Gray	5.50
ISE168	0.840	OD581+BY377C	36617.00	4/0 STR	Pink	36586	3/0 STR, 4/0 COM	Black	5.50
ISE169	0.840	OD581+BY377C	36617.00	4/0 STR	Pink	36617	4/0 STR	Pink	5.50



## COMPRESSION COVERS

### C SERIES

Dual Rated Insulated



#### FEATURES

- Hinged polyurethane cover for easy installation of WRD series tap connectors.
- Eliminates taping.
- Drain ports prevent accumulation of moisture.
- Ultraviolet stabilized.

SKU	Capacity	Material
<b>C2</b>	All 5/8" OD. Sleeve 2" long or less	Polyurethane
<b>C5</b>	All "O" die taps 1 3/4" long or less	Polyurethane
<b>C7</b>	All "D" die taps 2 1/2" long or less	Polyurethane
<b>C9</b>	All "N" die taps up to 2" long	Polyurethane

## STACKING ADAPTERS

### SA SERIES

For Compression Terminals



#### FEATURES

- Tin-plated pure aluminum for good conductivity and corrosion resistance.
- Allows for stacking of standard two hole compression lugs and keeps inventories to a minimum.
- To stack 4-hole NECA drilled terminals, use two adapters assembled in parallel.

SKU	H (IN)	Connector Size Range
<b>SA10-400</b>	0.875	1/0-400 MCM
<b>SA500-1000</b>	1.125	500-1000 MCM