

POLARIS[®]



PRE-INSULATED CONNECTORS

PRODUCT BROCHURE



POLARIS®

THE ORIGINAL IS STILL THE BEST

Polaris® Pre-Insulated Connectors set the benchmark for professional quality when splicing or tapping into a primary power conductor. Since introducing the first pre-insulated connector over 35 years ago, Polaris has helped contractors and electricians work faster and safer, saving them time and money. When you need a pre-insulated connector, choose the preferred and trusted brand still asked for by name.



A SOLUTION FOR EVERY APPLICATION

The all-in-one design of Polaris Pre-Insulated Connectors installs more easily without tape or additional tools. For wet or dry locations, for parallel runs of primary power conductors or connecting fine-stranded extra-flexible copper cable, there's a broad range of sizes, port numbers and configurations to match the needs of any professional.



DESIGNED FOR EASY INSTALLATION

The innovative design and labor-saving features of every Polaris Pre-Insulated Connector go beyond just making connections faster. The ergonomic shape and pre-filled oxide inhibitor make installation simple and comfortable. Removable wire port plugs and set screw covers prevent infiltration of dirt or debris. It's easy to see why professionals choose Polaris.

THE POLARIS DIFFERENCE

REMOVABLE PORT PLUGS

Secures entry port closures and ensures debris prevention

HIGHLY CONDUCTIVE

Aluminum alloy construction for superior conductivity

ABRASION & CHEMICAL RESISTANT

Plastisol insulation for maximum protection

PRE-FILLED WITH OXIDE INHIBITOR

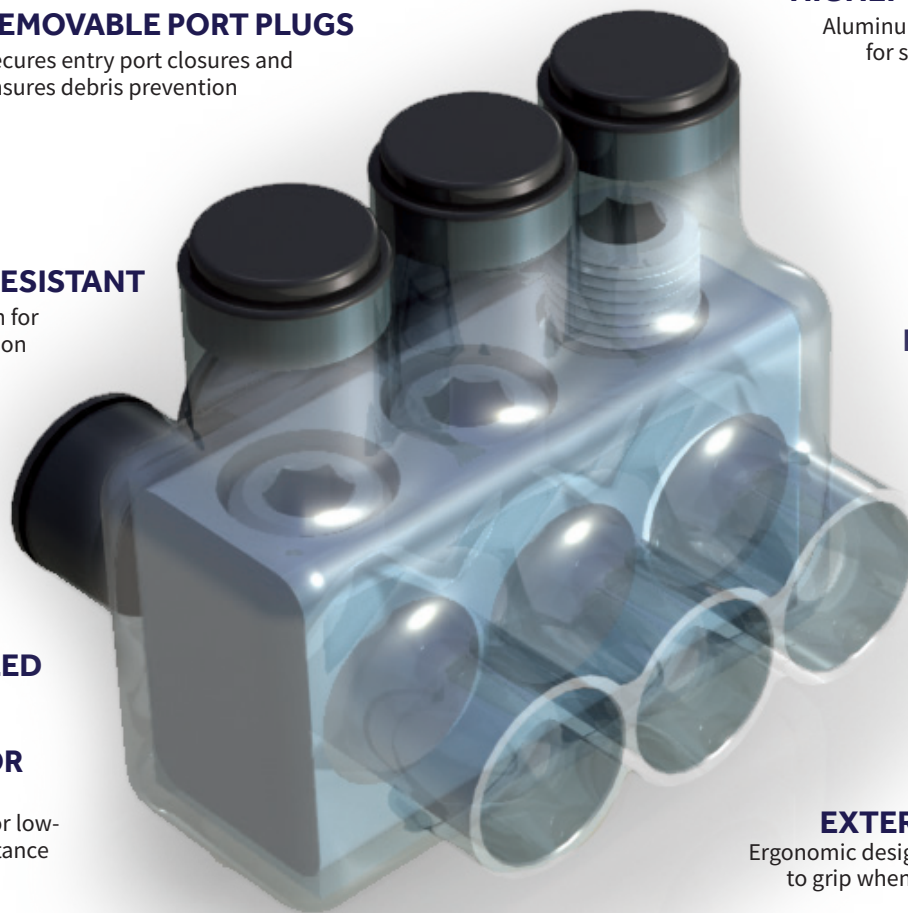
Corrosion prevention for low-contact resistance connections

PRE-FILLED WITH OXIDE INHIBITOR

Corrosion prevention for low-contact resistance connections

SMOOTH EXTERIOR FINISH

Ergonomic design is comfortable to grip when applying torque



From engineering to manufacturing, Polaris pre-insulated connectors are American-made in Odessa, Florida, since 1985.

THE ORIGINAL IS STILL THE BEST

It's easy to see why the industry's original pre-insulated connector is still the brand most asked for by name. Polaris Black offers dependable performance in any application, including mountable options, connectors with stacked ports for tight spaces and heavy-duty UL-rated connectors for parallel runs. Polaris Black: a pioneer in high-quality, effortless connections for over 30 years.



THE BLACK DIFFERENCE

Withstand the Elements

Durable insulating layer protects from chemicals and abrasion

Removable Port Plugs

Secures entry port closures and ensures debris prevention

Smooth Exterior Finish

Ergonomic design is comfortable to grip when applying torque

Pre-filled with Oxide Inhibitor

Corrosion prevention for low-contact resistance connections

●●●● Parallel Rated ●●●● and UL Listed

Multiple parallel configurations tested for maximum ampacities

See page 18 for a full listing of parallel rated connectors

UL Listed for Line Side of Service Equipment

Wide range of connector sizes meet NEC 230.46 code requirements. See page 20-23 for a full list of UL-listed options.

MULTIPLE CONFIGURATIONS

SINGLE-SIDE ENTRY



DUAL-SIDE ENTRY



IN-LINE ENTRY



STACKED



MOUNTABLE



POLARIS BLACK SPECIFICATIONS



SINGLE-SIDE ENTRY

CATALOG NUMBER	WIRE RANGE (Kcmil/AWG)	PORTS	LENGTH (IN.)	WIDTH (IN.)	HEIGHT (IN.)	MAX AMP (ALUM-COPP)	HEX KEY (IN.)
IPL4-3	4 - 14	3	1.63	1.24	1.36	75-95	1/8
IPL4-4		4	2.06	1.24	1.36	75-95	1/8
IPL4-5		5	2.48	1.24	1.36	75-95	1/8
IPL4-6		6	2.90	1.24	1.36	75-95	1/8
IPL4-8		8	3.74	1.24	1.36	75-95	1/8
IPL4-10		10	4.59	1.24	1.36	75-95	1/8
IPL1/0-3	1/0 - 14	3	2.33	1.55	1.74	135-170	3/16
IPL1/0-4		4	2.98	1.55	1.74	135-170	3/16
IPL1/0-5		5	3.63	1.55	1.74	135-170	3/16
IPL1/0-6		6	4.28	1.55	1.74	135-170	3/16
IPL1/0-8		8	5.58	1.55	1.74	135-170	3/16
IPL3/0-3	3/0 - 6	3	2.71	1.60	1.83	175-225	1/4
IPL3/0-4		4	3.49	1.60	1.83	175-225	1/4
IPL3/0-5		5	4.27	1.60	1.83	175-225	1/4
IPL3/0-6		6	5.05	1.60	1.83	175-225	1/4
IPL250-3	250 - 6	3	3.01	2.01	2.29	230-290	5/16
IPL250-4		4	3.88	2.01	2.29	410-527	5/16
IPL250-5		5	4.74	2.01	2.29	410-527	5/16
IPL250-6		6	5.60	2.01	2.29	615-790	5/16
IPL250-8		8	7.32	2.01	2.29	820-1053	5/16
IPL350-3	350 - 10	3	3.55	2.13	2.68	280-350	5/16
IPL350-4		4	4.60	2.13	2.68	514-657	5/16
IPL350-5		5	5.65	2.13	2.68	514-657	5/16
IPL350-6		6	6.70	2.13	2.68	770-985	5/16
IPL350-8		8	8.80	2.13	2.68	1028-1314	5/16
IPL500-3	500 - 4	3	4.04	2.50	2.95	350-430	5/16
IPL500-4		4	5.19	2.50	2.95	631-806	5/16
IPL500-5		5	6.33	2.50	2.95	631-806	5/16
IPL500-6		6	7.48	2.50	2.95	946-1209	5/16
IPL500-8		8	9.77	2.50	2.95	1262-1612	5/16
IPL600-3	600 - 6	3	4.50	2.83	3.32	385-475	5/16
IPL600-4		4	5.80	2.83	3.32	810-1035	5/16
IPL600-6		6	8.40	2.83	3.32	1215-1554	5/16
IPL750-3*	750 - 1/0	3	4.90	2.75	3.46	385-475	3/8
IPL750-4*		4	6.33	2.75	3.46	930-1178	3/8

DUAL-SIDE ENTRY

CATALOG NUMBER	WIRE RANGE (Kcmil/AWG)	PORTS	LENGTH (IN.)	WIDTH (IN.)	HEIGHT (IN.)	MAX AMP (ALUM-COPP)	HEX KEY (IN.)
IT-4	4 - 14	2	1.21	1.24	1.36	75-95	1/8
ITD-4		2	1.21	1.37	1.36	75-95	1/8
IPLD4-3		3	1.63	1.37	1.36	75-95	1/8
IPLD4-4		4	2.06	1.37	1.36	75-95	1/8
IPLD4-5		5	2.48	1.37	1.36	75-95	1/8
IPLD4-6		6	2.90	1.37	1.36	75-95	1/8
IT-2	2 - 14	2	1.32	1.24	1.39	100-130	5/32
IPLD2-3		3	1.83	1.39	1.39	100-130	5/32
IPLD2-4		4	2.34	1.39	1.39	100-130	5/32
IPLD2-5		5	2.85	1.39	1.39	100-130	5/32
IPLD2-6		6	3.36	1.39	1.39	100-130	5/32
IT-1/0	1/0 - 14	2	1.68	1.55	1.74	135-170	3/16
IPLD1/0-3		3	2.33	1.74	1.74	135-170	3/16
IPLD1/0-4		4	2.98	1.74	1.74	135-170	3/16
IPLD1/0-5		5	3.63	1.74	1.74	135-170	3/16
IPLD1/0-6		6	4.28	1.74	1.74	135-170	3/16
IT-2/0	2/0 - 14	2	1.78	1.55	1.77	150-195	3/16
IPLD2/0-3		3	2.53	1.75	1.77	150-195	3/16
IPLD2/0-4		4	3.28	1.75	1.77	150-195	3/16
IPLD2/0-5		5	4.03	1.75	1.77	150-195	3/16
IPLD2/0-6		6	4.78	1.75	1.77	150-195	3/16
IT-3/0	3/0 - 6	2	1.93	1.60	1.83	175-225	1/4
IPLD3/0-3		3	2.71	1.83	1.83	175-225	1/4
IPLD3/0-4		4	3.49	1.83	1.83	175-225	1/4
IPLD3/0-5		5	4.27	1.83	1.83	175-225	1/4
IPLD3/0-6		6	5.05	1.83	1.83	175-225	1/4
IPLD3/0-8		8	6.61	1.83	1.83	175-225	1/4
IPLD3/0-10		10	8.17	1.83	1.83	175-225	1/4
IPLD3/0-12		12	9.73	1.83	1.83	175-225	1/4
IT-250	250 - 6	2	2.15	2.28	2.29	230-290	5/16
IPLD250-3		3	3.01	2.28	2.29	230-290	5/16
IPLD250-4		4	3.88	2.28	2.29	410-527	5/16
IPLD250-5		5	4.74	2.28	2.29	410-527	5/16
IPLD250-6		6	5.60	2.28	2.29	615-790	5/16
IPLD250-8		8	7.32	2.28	2.29	820-1053	5/16
IPLD250-10		10	9.05	2.28	2.29	820-1053	5/16
IPLD250-12		12	10.77	2.28	2.29	820-1053	5/16
IPLD250-14		14	12.50	2.28	2.29	820-1053	5/16
IT-350	350 - 10	2	2.50	2.41	2.68	280-350	5/16
IPLD350-3		3	3.55	2.41	2.68	280-350	5/16
IPLD350-4		4	4.60	2.41	2.68	514-657	5/16
IPLD350-5		5	5.65	2.41	2.68	514-657	5/16
IPLD350-6		6	6.70	2.41	2.68	770-985	5/16
IPLD350-8		8	8.80	2.41	2.68	1028-1314	5/16
IPLD350-10		10	10.90	2.41	2.68	1028-1314	5/16
IPLD350-12		12	13.00	2.41	2.68	1028-1314	5/16

DUAL-SIDE ENTRY, CON'T

CATALOG NUMBER	WIRE RANGE (Kcmil/AWG)	PORTS	LENGTH (IN.)	WIDTH (IN.)	HEIGHT (IN.)	MAX AMP (ALUM-COPP)	HEX KEY (IN.)	
IT-500	500 - 4	2	2.90	2.83	2.95	350-430	5/16	
IPLD500-3		3	4.04	2.83	2.95	350-430	5/16	
IPLD500-4		4	5.19	2.83	2.95	631-806	5/16	
IPLD500-5		5	6.33	2.83	2.95	631-806	5/16	
IPLD500-6		6	7.48	2.83	2.95	946-1209	5/16	
IPLD500-8		8	9.77	2.83	2.95	1262-1612	5/16	
IPLD500-10		10	12.06	2.83	2.95	1262-1612	5/16	
IPLD500-12		12	14.35	2.83	2.95	1262-1612	5/16	
IPLD500-14		14	16.64	2.83	2.95	1262-1612	5/16	
IT-600		600 - 6	2	3.20	3.14	3.32	385-475	5/16
IPLD600-3	3		4.50	3.14	3.32	385-475	5/16	
IPLD600-4	4		5.80	3.14	3.32	810-1035	5/16	
IPLD600-5	5		7.10	3.14	3.32	810-1035	5/16	
IPLD600-6	6		8.40	3.14	3.32	1215-1554	5/16	
IPLD600-8	8		11.00	3.14	3.32	1620-2070	5/16	
IPLD600-10	10		13.60	3.14	3.32	1620-2070	5/16	
IPLD600-12	12		16.20	3.14	3.32	1620-2070	5/16	
IT-750*	750 - 1/0		2	3.48	3.41	3.46	385-475	3/8
IPLD750-3*			3	4.90	3.41	3.46	385-475	3/8
IPLD750-4*		4	6.33	3.41	3.46	930-1178	3/8	
IPLD750-5*		5	7.75	3.41	3.46	930-1178	3/8	
IPLD750-6*		6	9.18	3.41	3.46	1395-1767	3/8	
IPLD750-8*		8	12.03	3.41	3.46	1860-2356	3/8	
IPLD750-10*		10	14.88	3.41	3.46	1860-2356	3/8	
IPLD750-12*		12	17.73	3.41	3.46	1860-2356	3/8	
IPLD750-14*		14	20.58	3.41	3.46	1860-2356	3/8	

DUAL-SIDE ENTRY, DOUBLE SCREW

CATALOG NUMBER	WIRE RANGE (Kcmil/AWG)	PORTS	LENGTH (IN.)	WIDTH (IN.)	HEIGHT (IN.)	MAX AMP (ALUM-COPP)	HEX KEY (IN.)
ITH-750**	750 - 1/0	2	3.48	4.47	3.31	435-535	5/16
IPLDH750-3**		3	4.90	4.47	3.31	435-535	5/16
IPLDH750-4**		4	6.33	4.47	3.31	930-1178	5/16
IPLDH750-5**		5	7.75	4.47	3.31	930-1178	5/16
IPLDH750-6**		6	9.18	4.47	3.31	1395-1767	5/16
IPLDH750-8**		8	12.03	4.47	3.31	1860-2356	5/16
IPLDH750-10**		10	14.88	4.47	3.31	1860-2356	5/16

DUAL-SIDE ENTRY, STACKED DOUBLE ROW

CATALOG NUMBER	WIRE RANGE (Kcmil/AWG)	PORTS	LENGTH (IN.)	WIDTH (IN.)	HEIGHT (IN.)	MAX AMP (ALUM-COPP)	HEX KEY (IN.)
IPLDS350-4	350 - 10	4	2.50	3.91	3.75	514-657	5/16
IPLDS350-6		6	3.55	3.91	3.75	770-985	5/16
IPLDS350-8		8	4.60	3.91	3.75	1028-1314	5/16
IPLDS350-10		10	5.65	3.91	3.75	1028-1314	5/16
IPLDS350-12		12	6.70	3.91	3.75	1028-1314	5/16
IPLDS500-4	500 - 4	4	2.90	4.70	4.32	631-806	5/16
IPLDS500-6		6	4.04	4.70	4.32	946-1209	5/16
IPLDS500-8		8	5.19	4.70	4.32	1262-1612	5/16
IPLDS500-10		10	6.33	4.70	4.32	1262-1612	5/16
IPLDS500-12		12	7.48	4.70	4.32	1262-1612	5/16
IPLDS750-6*	750 - 1/0	6	4.90	4.97	4.96	1395-1767	3/8
IPLDS750-8*		8	6.33	4.97	4.96	1860-2356	3/8
IPLDS750-10*		10	7.75	4.97	4.96	1860-2356	3/8
IPLDS750-12*		12	9.18	4.97	4.96	1860-2356	3/8
IPLDS7502-1/010**	750 - 1/0	2	6.460	4.470	3.39	1860-2356	3/8
	1/0 - 14	10					3/16

IN-LINE ENTRY

CATALOG NUMBER	WIRE RANGE (Kcmil/AWG)	PORTS	LENGTH (IN.)	WIDTH (IN.)	HEIGHT (IN.)	MAX AMP (ALUM-COPP)	HEX KEY (IN.)
ISR-1/0	1/0 - 14	2	3.23	0.96	1.74	135-170	3/16
ISR-250	250 - 6	2	3.95	1.21	2.29	230-290	5/16
ISR-350	350 - 10	2	4.47	1.33	2.68	280-350	5/16
ISR-500	500 - 4	2	5.37	1.46	2.95	350-430	5/16
ISR-600	600 - 6	2	6.10	1.77	3.32	385-475	5/16
ISRH-750**	750-1/0	2	7.26	2.83	3.31	435*535	5/16

MOUNTABLE, SINGLE-SIDE ENTRY

CATALOG NUMBER	WIRE RANGE (Kcmil/AWG)	PORTS	LENGTH (IN.)	WIDTH (IN.)	HEIGHT (IN.)	MAX AMP (ALUM-COPP)	HEX KEY (IN.)
IPLM4-4	4 - 14	4	3.26	1.24	1.47	75-95	1/8
IPLM1/0-4	1/0 - 14	4	4.19	1.55	1.84	135-170	3/16
IPLM1/0-5		5	4.84	1.55	1.84	135-170	3/16

MOUNTABLE, DUAL-SIDE ENTRY

CATALOG NUMBER	WIRE RANGE (Kcmil/AWG)	PORTS	LENGTH (IN.)	WIDTH (IN.)	HEIGHT (IN.)	MAX AMP (ALUM-COPP)	HEX KEY (IN.)
IPLMD3/0-3	3/0 - 6	3	3.95	1.83	1.95	175-225	1/4
IPLMD3/0-4		4	4.73	1.83	1.95	175-225	1/4
IPLMD3/0-5		5	5.51	1.83	1.95	175-225	1/4
IPLMD250-3	250 - 6	3	4.45	2.28	2.32	230-290	5/16
IPLMD250-4		4	5.32	2.28	2.32	410-527	5/16
IPLMD250-5		5	6.18	2.28	2.32	410-527	5/16
IPLMD250-6		6	7.04	2.28	2.32	615-790	5/16
IPLMD250-8		8	8.76	2.28	2.32	820-1053	5/16
IPLMD250-10		10	10.49	2.28	2.32	820-1053	5/16
IPLMD250-12	12	12.21	2.28	2.32	820-1053	5/16	
IPLMD350-3	350 - 10	3	5.08	2.41	2.71	280-350	5/16
IPLMD350-4		4	6.13	2.41	2.71	514-657	5/16
IPLMD350-5		5	7.18	2.41	2.71	514-657	5/16
IPLMD350-6		6	8.23	2.41	2.71	770-985	5/16
IPLMD350-8		8	10.33	2.41	2.71	1028-1314	5/16
IPLMD350-10		10	12.43	2.41	2.71	1028-1314	5/16
IPLMD350-12	12	14.53	2.41	2.71	1028-1314	5/16	
IPLMD500-3	500 - 4	3	5.46	2.83	2.98	350-430	5/16
IPLMD500-4		4	6.61	2.83	2.98	631-806	5/16
IPLMD500-5		5	7.75	2.83	2.98	631-806	5/16
IPLMD500-6		6	8.90	2.83	2.98	946-1209	5/16
IPLMD500-8		8	11.19	2.83	2.98	1262-1612	5/16
IPLMD500-10		10	13.48	2.83	2.98	1262-1612	5/16
IPLMD500-12	12	15.77	2.83	2.98	1262-1612	5/16	
IPLMD600-3	600 - 6	3	5.83	3.14	33.32	385-475	5/16
IPLMD600-4		4	7.13	3.14	33.32	810-1035	5/16
IPLMD600-5		5	8.43	3.14	33.32	810-1035	5/16
IPLMD600-6		6	9.73	3.14	33.32	1215-1554	5/16
IPLMD600-8		8	12.33	3.14	33.32	1620-2070	5/16
IPLMD600-10		10	14.93	3.14	33.32	1620-2070	5/16
IPLMD600-12	12	17.53	3.14	33.32	1620-2070	5/16	
IPLMD750-3*	750 - 1/0	3	6.28	3.41	3.48	385-475	3/8
IPLMD750-4*		4	7.71	3.41	3.48	930-1178	3/8
IPLMD750-6*		6	10.56	3.41	3.48	1395-1767	3/8
IPLMD750-8*		8	13.41	3.41	3.48	1860-2356	3/8
IPLMD750-12*		12	19.11	3.41	3.48	1860-2356	3/8

Wire/Cable Class

Use with Class B and C conductors

Dual Rated

Aluminum, Copper

Maximum Voltage

600V

Location

Dry locations only

Operating Temperature Rating

-45°C to 90°C
(-49°F to 194°F)

Temperature Rating

-45°C to 90°C
(-49°F to 194°F)

Material

6061-T6 aluminum alloy Insulated with high dielectric strength plastisol for increased chemical and abrasion protection

WIRE CONNECTOR



Scan for full installation instructions



* IT, IPL, IPLD, IPLDS, IPLMD - 750MCM connectors are rated AL7CU, 75°C

** ITH, IPLH, IPLDH - 750MCM and IPLDS7502-1/010 connectors are rated AL9CU, 90°C

THE CHOICE IS CLEAR

Transparent pre-insulated connectors make it easy to see conductor placement, guaranteeing a high-quality connection. Key features include the comfortable ergonomic design, pre-filled oxide inhibitor and heavy-duty offerings rated for parallel runs. Usable on both line and load sides of an installation, Vision Tap is the most versatile multi-tap connector on the market.



THE VISION TAP ADVANTAGE

Clear Design

Visually confirm conductor placement for secure connections

Smooth Exterior Finish

Ergonomic design is comfortable to grip when applying torque

●●●● Parallel Rated ●●●● and UL Listed

Multiple parallel configurations tested for maximum ampacities

Removable Port Plugs

Secures entry port closures and ensures debris prevention

Pre-filled with Oxide Inhibitor

Corrosion prevention for low-contact resistance connections

See page 18 for a full listing of parallel rated connectors

UL Listed for Line Side of Service Equipment

Wide range of connector sizes meet NEC 230.46 code requirements. See page 20-23 for a full list of UL-listed options.

MULTIPLE CONFIGURATIONS

SINGLE-SIDE ENTRY



DUAL-SIDE ENTRY



IN-LINE ENTRY



POLARIS VISION TAP SPECIFICATIONS



SINGLE-SIDE ENTRY

CATALOG NUMBER	WIRE RANGE (Kcmil/AWG)	PORTS	LENGTH (IN.)	WIDTH (IN.)	HEIGHT (IN.)	MAX AMP (ALUM-COPP)	HEX KEY (IN.)
IPL4-3C		3	1.63	1.24	1.36	75-95	1/8
IPL4-4C		4	2.06	1.24	1.36	75-95	1/8
IPL4-5C		5	2.48	1.24	1.36	75-95	1/8
IPL4-6C		6	2.90	1.24	1.36	75-95	1/8
IPL1/0-3C	1/0 - 14	3	2.33	1.55	1.74	135-170	3/16
IPL1/0-4C		4	2.98	1.55	1.74	135-170	3/16
IPL3/0-3C	3/0 - 6	3	2.71	1.60	1.83	175-225	1/4
IPL3/0-4C		4	3.49	1.60	1.83	175-225	1/4
IPL250-3C	250 - 6	3	3.01	2.01	2.29	230-290	5/16
IPL250-4C		4	3.88	2.01	2.29	410-527	5/16
IPL350-3C	350 - 10	3	3.55	2.13	2.68	280-350	5/16
IPL500-3C	500 - 4	3	4.04	2.500	2.95	350-430	5/16
IPL500-4C		4	5.19	2.500	2.95	631-806	5/16



DUAL-SIDE ENTRY

CATALOG NUMBER	WIRE RANGE (MCM/AWG)	PORTS	LENGTH (IN.)	WIDTH (IN.)	HEIGHT (IN.)	MAX AMP (ALUM-COPP)	HEX KEY (IN.)
IT-4C	4 - 14	2	1.21	1.24	1.36	75-95	1/8
IPLD4-3C		3	1.63	1.37	1.36	75-95	1/8
IPLD4-4C		4	2.06	1.37	1.36	75-95	1/8
IPLD4-5C		5	2.48	1.37	1.36	75-95	1/8
IPLD4-6C		6	2.90	1.37	1.36	75-95	1/8
IT-2C	2 - 14	2	1.32	1.24	1.39	100-130	5/32
IPLD2-3C		3	1.83	1.39	1.39	100-130	5/32
IPLD2-4C		4	2.34	1.39	1.39	100-130	5/32
IPLD2-5C		5	2.85	1.39	1.39	100-130	5/32
IPLD2-6C		6	3.36	1.39	1.39	100-130	5/32
IT-1/0C	1/0 - 14	2	1.68	1.55	1.74	135-170	3/16
IPLD1/0-3C		3	2.33	1.74	1.74	135-170	3/16
IPLD1/0-4C		4	2.98	1.74	1.74	135-170	3/16
IPLD1/0-5C		5	3.63	1.74	1.74	135-170	3/16
IPLD1/0-6C		6	4.28	1.74	1.74	135-170	3/16
IT-2/0C	2/0 - 14	2	1.78	1.55	1.77	150-195	3/16
IPLD2/0-3C		3	2.53	1.75	1.77	150-195	3/16
IPLD2/0-4C		4	3.28	1.75	1.77	150-195	3/16
IPLD2/0-5C		5	4.03	1.75	1.77	150-195	3/16
IPLD2/0-6C		6	4.78	1.75	1.77	150-195	3/16
IT-3/0C	3/0 - 6	2	1.93	1.60	1.83	175-225	1/4
IPLD3/0-3C		3	2.71	1.83	1.83	175-225	1/4
IPLD3/0-4C		4	3.49	1.83	1.83	175-225	1/4
IPLD3/0-6C		6	5.05	1.83	1.83	175-225	1/4
IT-250C	250 - 6	2	2.15	2.28	2.29	230-290	5/16
IPLD250-3C		3	3.01	2.28	2.29	230-290	5/16
IPLD250-4C		4	3.88	2.28	2.29	410-527	5/16
IPLD250-5C		5	4.74	2.28	2.29	410-527	5/16
IPLD250-6C		6	5.60	2.28	2.29	615-790	5/16
IPLD250-8C		8	7.32	2.28	2.29	820-1053	5/16
IT-350C	350 - 10	2	2.50	2.41	2.68	280-350	5/16
IPLD350-3C		3	3.55	2.41	2.68	280-350	5/16
IPLD350-4C		4	4.60	2.41	2.68	514-657	5/16
IPLD350-5C		5	5.65	2.41	2.68	514-657	5/16
IPLD350-6C		6	6.70	2.41	2.68	770-985	5/16
IPLD350-8C		8	8.80	2.41	2.68	1028-1314	5/16
IT-500C	500 - 4	2	2.90	2.83	2.95	350-430	5/16
IPLD500-3C		3	4.04	2.83	2.95	350-430	5/16
IPLD500-4C		4	5.19	2.83	2.95	631-806	5/16
IPLD500-5C		5	6.33	2.83	2.95	631-806	5/16
IPLD500-6C		6	7.48	2.83	2.95	946-1209	5/16
IPLD500-8C		8	9.77	2.83	2.95	1262-1612	5/16
IPLD500-10C		10	12.06	2.83	2.95	1262-1612	5/16

DUAL-SIDE ENTRY CON'T

CATALOG NUMBER	WIRE RANGE (MCM/AWG)	PORTS	LENGTH (IN.)	WIDTH (IN.)	HEIGHT (IN.)	MAX AMP (ALUM-COPP)	HEX KEY (IN.)
IT-600C	600 - 6	2	3.20	3.14	3.32	385-475	5/16
IPLD600-3C		3	4.50	3.14	3.32	385-475	5/16
IPLD600-4C		4	5.80	3.14	3.32	810-1035	5/16
IPLD600-5C		5	7.10	3.14	3.32	810-1035	5/16
IPLD600-6C		6	8.40	3.14	3.32	1215-1554	5/16
IPLD600-8C		8	11.00	3.14	3.32	1620-2070	5/16
IT-750C*	750 - 1/0	2	3.48	3.41	3.42	385-475	3/8
IPLD750-3C*		3	4.90	3.41	3.42	385-475	3/8
IPLD750-4C*		4	6.33	3.41	3.42	930-1178	3/8
IPLD750-6C*		6	9.18	3.41	3.42	1395-1767	3/8
IPLD750-8C*		8	12.03	3.41	3.42	1860-2356	3/8

IN-LINE ENTRY

CATALOG NUMBER	WIRE RANGE (Kcmil/AWG)	PORTS	LENGTH (IN.)	WIDTH (IN.)	HEIGHT (IN.)	MAX AMP (ALUM-COPP)	HEX KEY (IN.)
ISR-1/0C	1/0 - 14	2	3.23	0.96	1.74	135-170	3/16
ISR-250C	250 - 6	2	3.95	1.21	2.29	230-290	5/16
ISR-350C	350 - 10	2	4.47	1.33	2.68	280-350	5/16
ISR-500C	500 - 4	2	5.37	1.46	2.95	350-430	5/16
ISR-600C	600 - 6	2	6.10	1.77	3.32	385-475	5/16
ISRH-750C**	750 - 1/0	2	7.26	2.83	3.31	435-535	5/16

Wire/Cable Class

Use with Class B and C conductors

Dual Rated

Aluminum, Copper

Maximum Voltage

600V

Location

Dry locations only

Operating Temperature Rating

-45°C to 90°C
(-49°F to 194°F)

Temperature Rating

-45°C to 90°C
(-49°F to 194°F)

Material

6061-T6 aluminum alloy Insulated with high dielectric strength plastisol for increased chemical and abrasion protection

WIRE CONNECTOR



Scan for full installation instructions



* IT, IPLD - 750MCM connectors are rated AL7CU, 75°C

** ISRH-750MCM connector is rated AL9CU, 90°C

THE CHOICE FOR COPPER CONDUCTORS

Choose Polaris Grey when connecting fine-stranded, flexible or extra-flexible copper conductors. The ergonomic design, exceptional resistance to abrasion or chemicals and durable plastisol insulation make this a dependable, long-lasting connector that is easy to install. Save time and money on every job with the all-in-one design of Polaris pre-insulated connectors.



THE VISION TAP ADVANTAGE

Designed for Copper

Use with fine-stranded, flexible and extra-flexible conductors

Removable Port Plugs

Secures entry port closures and ensures debris prevention

Smooth Exterior Finish

Ergonomic design is comfortable to grip when applying torque

Ferrule

Tin-plated ferrule captures and protects fine conductor strands

CONFIGURATION

SINGLE-SIDE ENTRY



POLARIS GREY SPECIFICATIONS

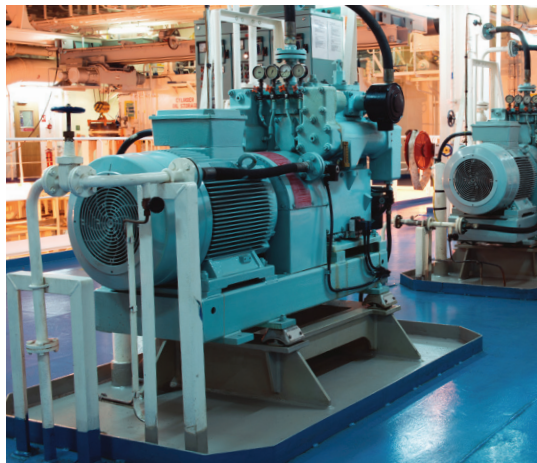


SINGLE-SIDE ENTRY

CATALOG NUMBER	WIRE RANGE (AWG)	PORTS	LENGTH (IN.)	WIDTH (IN.)	HEIGHT (IN.)	MAX AMP (COPPER)	HEX KEY (IN.)
ITG-6	6-14 (Building Wire Class)	2	1.21	1.24	1.41	75	1/8
IPLG6-3	6-14 (Flexible Wire Class)	3	1.63	1.24	1.41	75	1/8
IPLG6-4		4	2.06	1.24	1.41	75	1/8
ITG-1	1-10 (Building Wire Class)	2	1.68	1.55	1.79	150	3/16
IPLG1-3	2-10 (Flexible Wire Class)	3	2.33	1.55	1.79	150	3/16
IPLG1-4		4	2.98	1.55	1.79	150	3/16
ITG-3/0	3/0-4 (Building Wire Class)	2	1.93	1.60	1.85	225	3/16
IPLG3/0-3	2/0-2 (Flexible Wire Class)	3	2.71	1.60	1.85	225	3/16
IPLG3/0-4		4	3.49	1.60	1.85	225	3/16

BUILDING WIRE CLASS B, C, D

FLEXIBLE WIRE CLASS G, H, I, K, M, DLO



Wire/Cable Class

Use with Class B, C, D, G, H, I, K, M and DLO copper conductors

Wire Type

Copper wire only

Maximum Voltage

600V

Location

Dry locations only

Operating Temperature Rating

-45°C to 90°C
(-49°F to 194°F)

Temperature Rating

-45°C to 90°C
(-49°F to 194°F)

Material

6061-T6 aluminum alloy Insulated with high dielectric strength plastisol for increased chemical and abrasion protection

WIRE CONNECTOR



Scan for full installation instructions



EXTRA PROTECTION IN HARSH CONDITIONS

Polaris Edge is our toughest offering, designed for direct burial or temporary submersion and engineered to excel in those environments. Maintains a tight seal with trim-to-size wire port plugs and double o-rings on the screw port caps to ensure that no water or dirt infiltration interferes with your connection. When you need reliable performance, choose Polaris, the original innovator.



DRY, WET OR BURIED

Protected from the Elements

Temporary submersion up to 6' deep and direct burial applications

Engineered to Last

Durable EPDM rubber insulation for abrasion and chemical resistance

Removable Port Plugs

Secures entry port closures and ensures debris prevention

Pre-filled with Oxide Inhibitor

Corrosion prevention for low-contact resistance connections

MULTIPLE CONFIGURATIONS

SINGLE-SIDE ENTRY



OFFSET ENTRY



IN-LINE ENTRY



POLARIS EDGE SPECIFICATIONS



SINGLE-SIDE ENTRY

CATALOG NUMBER	WIRE RANGE (Kcmil/AWG)	PORTS	LENGTH (IN.)	WIDTH (IN.)	HEIGHT (IN.)	MAX AMP (ALUM-COPP)	HEX KEY (IN.)
ISPB2/0-2	2/0 - 14	2	1.93	2.66	2.11	150-195	3/16
ISPB2/0-3		3	2.79	2.66	2.11	150-195	3/16
ISPB2/0-4		4	3.65	2.66	2.11	150-195	3/16
ISPB2/0-6		6	5.37	2.66	2.11	150-195	3/16
ISPB350-3	350 - 12	3	3.61	4.14	3.06	280-350	5/16
ISPB350-4		4	4.80	4.14	3.06	514-657	5/16
ISPB350-6		6	7.18	4.14	3.06	770-985	5/16
ISPB600-3	600 - 12	3	4.87	5.43	3.80	385-475	5/16
ISPB600-4		4	6.56	5.43	3.80	810-1035	5/16
ISPB600-6		6	9.94	5.43	3.80	1215-1554	5/16

OFFSET ENTRY

CATALOG NUMBER	WIRE RANGE (Kcmil/AWG)	PORTS	LENGTH (IN.)	WIDTH (IN.)	HEIGHT (IN.)	MAX AMP (ALUM-COPP)	HEX KEY (IN.)
ISPB02/0	2/0 - 14	3	2.79	4.18	2.11	150-195	3/16

IN-LINE ENTRY

CATALOG NUMBER	WIRE RANGE (Kcmil/AWG)	PORTS	LENGTH (IN.)	WIDTH (IN.)	HEIGHT (IN.)	MAX AMP (ALUM-COPP)	HEX KEY (IN.)
ISPBS2/0	2/0 - 14	2	5.05	0.88	2.10	150-195	3/16
ISPBS350	350 - 10	2	8.71	1.69	3.39	280-350	5/16

Wire/Cable Class

Use with Class B and C conductors

Dual Rated

Aluminum, Copper

Location

Temporarily wet, dry and submersible locations

Operating Temperature Rating

-45°C to 90°C (-49°F to 194°F)

Temperature Rating

-45°C to 90°C (-49°F to 194°F)

UL* and ANSI Standards

ISPB2/0 Series and ISPBS350 in-line splice sizes meet or exceed UL 486D and ANSI C119.1
ISPBS350 and ISPB600 sizes meet ANSI C119.1

Material

6061-T6 aluminum alloy

Insulated with high dielectric strength EPDM rubber for increased chemical and abrasion protection

WIRE CONNECTOR



*ISPB2/0 Series and ISPBS350 Series Only

Scan for full installation instructions



POLARIS®

VISION TAP® & BLACK Parallel Rated



WIRE CONNECTOR
UL US
 LISTED
 UL 486A-486B

Polaris Vision Tap® and Black multi-tap connectors have high ampacity ratings, making them the only brand that can handle 4 parallel inputs. They're UL 486A-486B Listed for code compliance up to the maximum ampacity of copper and aluminum cables. For parallel runs done right, trust in Polaris.

WIRE RANGE (MCM/AWG)	IPL SERIES	IPLD SERIES	IPLMD SERIES	IPLDS SERIES	CU CONDUCTOR MAX AMPS	AL CONDUCTOR MAX AMPS
250-6	IPL250-4	IPLD250-4	IPLMD250-4	IPLDS250-4	527	410
	IPL250-4C	IPLD250-4C	-	-	527	410
	IPL250-5	IPLD250-5	IPLMD250-5	-	527	410
	-	IPLD250-5C	-	-	527	410
	IPL250-6	IPLD250-6	IPLMD250-6	-	790	615
	-	IPLD250-6C	-	-	790	615
	IPL250-8	IPLD250-8	IPLMD250-8	-	1053	820
	-	IPLD250-8C	-	-	1053	820
	-	IPLD250-10	IPLMD250-10	-	1053	820
-	IPLD250-12	IPLMD250-12	-	1053	820	
-	IPLD250-14	-	-	1053	820	
350-6	IPL350-4	IPLD350-4	IPLMD350-4	IPLDS350-4	657	514
	-	IPLD350-4C	-	-	657	514
	IPL350-5	IPLD350-5	IPLMD350-5	-	657	514
	-	IPLD350-5C	-	-	657	514
	IPL350-6	IPLD350-6	IPLMD350-6	IPLDS350-6	985	770
	-	IPLD350-6C	-	-	985	770
	IPL350-8	IPLD350-8	IPLMD350-8	IPLDS350-8	1314	1028
	-	IPLD350-8C	-	-	1314	1028
	-	IPLD350-10	IPLMD350-10	IPLDS350-10	1314	1028
-	IPLD350-12	IPLMD350-12	IPLDS350-12	1314	1028	
500-4	IPL500-4	IPLD500-4	IPLMD500-4	IPLDS500-4	806	631
	IPL500-4C	IPLD500-4C	-	-	806	631
	IPL500-5	IPLD500-5	IPLMD500-5	-	806	631
	-	IPLD500-5C	-	-	806	631
	IPL500-6	IPLD500-6	IPLMD500-6	IPLDS500-6	1209	946
	-	IPLD500-6C	-	-	1209	946
	IPL500-8	IPLD500-8	IPLMD500-8	IPLDS500-8	1612	1262
	-	IPLD500-8C	-	-	1612	1262
	-	IPLD500-10	IPLMD500-10	IPLDS500-10	1612	1262
-	IPLD500-12	IPLMD500-12	IPLDS500-12	1612	1262	
-	IPLD500-14	-	-	1612	1262	
600-6	IPL600-4	IPLD600-4	IPLMD600-4	-	1035	810
	-	IPLD600-4C	-	-	1035	810
	-	IPLD600-5	IPLMD600-5	-	1035	810
	-	IPLD600-5C	-	-	1035	810
	IPL600-6	IPLD600-6	IPLMD600-6	-	1554	1215
	-	IPLD600-6C	-	-	1554	1215
	-	IPLD600-8	IPLMD600-8	-	2070	1620
	-	IPLD600-10	IPLMD600-10	-	2070	1620
	-	IPLD600-12	IPLMD600-12	-	2070	1620
750-1/0	-	IPLDH750-4	-	-	1178	930
	-	IPLDH750-5	-	-	1178	930
	-	IPLDH750-6	-	-	1767	1395
	-	IPLDH750-8	-	-	2356	1860
	-	IPLDH750-10	-	-	2356	1860
	-	IPLDS7502-1/010	-	-	2356	1860

POLARIS ACCESSORIES



CATALOG NUMBER	DESCRIPTION	CONNECTOR SIZE
SITG1	Grey Replacement Sleeve	1
SITG3/0	Grey Replacement Sleeve	3/0
SITG6	Grey Replacement Sleeve	6
SP4	Set-Screw Covers	4
SP1/0	Set-Screw Covers	1/0
SP2/0S	Edge Set-Screw Covers	2/0
SP3/0	Set-Screw Covers	3/0
SP250	Set-Screw Covers	250
SP350	Set-Screw Covers	350
SP350-ISPB	Edge Set-Screw Covers	350
SP500	Set-Screw Covers	500
SP600	Set-Screw Covers	600
SP600S	Edge Set-Screw Covers	600
SP750	Set-Screw Covers	750
CP2/0S	Cable Port Plugs	2/0
CP3/0	Cable Port Plugs	3/0
CP250	Cable Port Plugs	250
CP350	Cable Port Plugs	350
CP350-ISPB	Edge Cable Port Plugs	350
CP500	Cable Port Plugs	500
CP600	Cable Port Plugs	600
CP600-ISPB	Edge Cable Port Plugs	600
CP750	Cable Port Plugs	750

New NEC 230.46 codes require connectors be properly tested for use on the line side of service. Polaris Black and Vision Tap lines both include a wide range of connectors that are UL-certified to meet these requirements. Choose any of these options for heavy-duty connections you can rely on.



CATALOG NUMBER	DESCRIPTION	CONNECTOR SIZE
IPL250-3	Polaris Black	3-Port Black Multi-Tap Pre-Insulated Connector, 250 MCM - 6 AWG
IPL250-4	Polaris Black	4-Port Black Multi-Tap Pre-Insulated Connector, 250 MCM - 6 AWG
IPL250-5	Polaris Black	5-Port Black Multi-Tap Pre-Insulated Connector, 250 MCM - 6 AWG
IPL250-6	Polaris Black	6-Port Black Multi-Tap Pre-Insulated Connector, 250 MCM - 6 AWG
IPL250-8	Polaris Black	8-Port Black Multi-Tap Pre-Insulated Connector, 250 MCM - 6 AWG
IPL3/0-3	Polaris Black	3-Port Black Multi-Tap Pre-Insulated Connector, 3/0-6 AWG
IPL3/0-4	Polaris Black	4-Port Black Multi-Tap Pre-Insulated Connector, 3/0-6 AWG
IPL3/0-5	Polaris Black	5-Port Black Multi-Tap Pre-Insulated Connector, 3/0-6 AWG
IPL3/0-6	Polaris Black	6-Port Black Multi-Tap Pre-Insulated Connector, 3/0-6 AWG
IPL350-3	Polaris Black	3-Port Black Multi-Tap Pre-Insulated Connector, 350 MCM - 10 AWG
IPL350-4	Polaris Black	4-Port Black Multi-Tap Pre-Insulated Connector, 350 MCM - 10 AWG
IPL350-5	Polaris Black	5-Port Black Multi-Tap Pre-Insulated Connector, 350 MCM - 10 AWG
IPL350-6	Polaris Black	6-Port Black Multi-Tap Pre-Insulated Connector, 350 MCM - 10 AWG
IPL350-8	Polaris Black	8-Port Black Multi-Tap Pre-Insulated Connector, 350 MCM - 10 AWG
IPL500-3	Polaris Black	3-Port Black Multi-Tap Pre-Insulated Connector, 500 MCM - 4 AWG
IPL500-4	Polaris Black	4-Port Black Multi-Tap Pre-Insulated Connector, 500 MCM - 4 AWG
IPL500-5	Polaris Black	5-Port Black Multi-Tap Pre-Insulated Connector, 500 MCM - 4 AWG
IPL500-6	Polaris Black	6-Port Black Multi-Tap Pre-Insulated Connector, 500 MCM - 4 AWG
IPL500-8	Polaris Black	8-Port Black Multi-Tap Pre-Insulated Connector, 500 MCM - 4 AWG
IPL600-3	Polaris Black	3-Port Black Multi-Tap Pre-Insulated Connector, 600 MCM - 6 AWG
IPL600-4	Polaris Black	4-Port Black Multi-Tap Pre-Insulated Connector, 600 MCM - 6 AWG
IPL600-6	Polaris Black	6-Port Black Multi-Tap Pre-Insulated Connector, 600 MCM - 6 AWG
IPL750-3	Polaris Black	3-Port Black Multi-Tap Pre-Insulated Connector, 750 MCM - 1/0 AWG
IPL750-4	Polaris Black	POLARIS IPL Multi-Tap4-Port 750 Black Connector SSE
IPLD2/0-3	Polaris Black	3-Port Black Multi-Tap Pre-Insulated Connector, 2/0 AWG - 14 AWG
IPLD2/0-4	Polaris Black	4-Port Black Multi-Tap Pre-Insulated Connector, 2/0 AWG - 14 AWG
IPLD2/0-5	Polaris Black	5-Port Black Multi-Tap Pre-Insulated Connector, 2/0 AWG - 14 AWG
IPLD2/0-6	Polaris Black	6-Port Black Multi-Tap Pre-Insulated Connector, 2/0 AWG - 14 AWG
IPLD250-10	Polaris Black	10-Port Black Multi-Tap Pre-Insulated Connector, 250 MCM - 6 AWG
IPLD250-12	Polaris Black	12-Port Black Multi-Tap Pre-Insulated Connector, 250 MCM - 6 AWG
IPLD250-14	Polaris Black	14-Port Black Multi-Tap Pre-Insulated Connector, 250 MCM - 6 AWG
IPLD250-3	Polaris Black	3-Port Black Multi-Tap Pre-Insulated Connector, 250 MCM - 6 AWG
IPLD250-4	Polaris Black	4-Port Black Multi-Tap Pre-Insulated Connector, 250 MCM - 6 AWG
IPLD250-5	Polaris Black	5-Port Black Multi-Tap Pre-Insulated Connector, 250 MCM - 6 AWG
IPLD250-6	Polaris Black	6-Port Black Multi-Tap Pre-Insulated Connector, 250 MCM - 6 AWG
IPLD250-8	Polaris Black	8-Port Black Multi-Tap Pre-Insulated Connector, 250 MCM - 6 AWG
IPLD3/0-10	Polaris Black	10-Port Black Multi-Tap Pre-Insulated Connector, 3/0 - 6 AWG
IPLD3/0-12	Polaris Black	12-Port Black Multi-Tap Pre-Insulated Connector, 3/0 - 6 AWG
IPLD3/0-3	Polaris Black	3-Port Black Multi-Tap Pre-Insulated Connector, 3/0 - 6 AWG
IPLD3/0-4	Polaris Black	4-Port Black Multi-Tap Pre-Insulated Connector, 3/0 - 6 AWG
IPLD3/0-5	Polaris Black	5-Port Black Multi-Tap Pre-Insulated Connector, 3/0 - 6 AWG
IPLD3/0-6	Polaris Black	6-Port Black Multi-Tap Pre-Insulated Connector, 3/0 - 6 AWG
IPLD3/0-8	Polaris Black	8-Port Black Multi-Tap Pre-Insulated Connector, 3/0 - 6 AWG
IPLD350-10	Polaris Black	10-Port Black Multi-Tap Pre-Insulated Connector, 350 MCM - 10 AWG
IPLD350-12	Polaris Black	12-Port Black Multi-Tap Pre-Insulated Connector, 350 MCM - 10 AWG
IPLD350-3	Polaris Black	3-Port Black Multi-Tap Pre-Insulated Connector, 350 MCM - 10 AWG
IPLD350-4	Polaris Black	4-Port Black Multi-Tap Pre-Insulated Connector, 350 MCM - 10 AWG

NEC 230.46 UL-LISTED OPTIONS



CATALOG NUMBER	DESCRIPTION	CONNECTOR SIZE
IPLD350-5	Polaris Black	5-Port Black Multi-Tap Pre-Insulated Connector, 350 MCM - 10 AWG
IPLD350-6	Polaris Black	6-Port Black Multi-Tap Pre-Insulated Connector, 350 MCM - 10 AWG
IPLD350-8	Polaris Black	8-Port Black Multi-Tap Pre-Insulated Connector, 350 MCM - 10 AWG
IPLD500-10	Polaris Black	10-Port Black Multi-Tap Pre-Insulated Connector, 500 MCM - 4 AWG
IPLD500-12	Polaris Black	12-Port Black Multi-Tap Pre-Insulated Connector, 500 MCM - 4 AWG
IPLD500-14	Polaris Black	14-Port Black Multi-Tap Pre-Insulated Connector, 500 MCM - 4 AWG
IPLD500-3	Polaris Black	3-Port Black Multi-Tap Pre-Insulated Connector, 500 MCM - 4 AWG
IPLD500-4	Polaris Black	4-Port Black Multi-Tap Pre-Insulated Connector, 500 MCM - 4 AWG
IPLD500-5	Polaris Black	5-Port Black Multi-Tap Pre-Insulated Connector, 500 MCM - 4 AWG
IPLD500-6	Polaris Black	6-Port Black Multi-Tap Pre-Insulated Connector, 500 MCM - 4 AWG
IPLD500-8	Polaris Black	8-Port Black Multi-Tap Pre-Insulated Connector, 500 MCM - 4 AWG
IPLD600-10	Polaris Black	10-Port Black Multi-Tap Pre-Insulated Connector, 600 MCM - 6 AWG
IPLD600-12	Polaris Black	12-Port Black Multi-Tap Pre-Insulated Connector, 600 MCM - 6 AWG
IPLD600-3	Polaris Black	3-Port Black Multi-Tap Pre-Insulated Connector, 600 MCM - 6 AWG
IPLD600-4	Polaris Black	4-Port Black Multi-Tap Pre-Insulated Connector, 600 MCM - 6 AWG
IPLD600-5	Polaris Black	5-Port Black Multi-Tap Pre-Insulated Connector, 600 MCM - 6 AWG
IPLD600-6	Polaris Black	6-Port Black Multi-Tap Pre-Insulated Connector, 600 MCM - 6 AWG
IPLD600-8	Polaris Black	8-Port Black Multi-Tap Pre-Insulated Connector, 600 MCM - 6 AWG
IPLD750-10	Polaris Black	10-Port Black Multi-Tap Pre-Insulated Connector, 750 MCM - 1/0 AWG
IPLD750-12	Polaris Black	12-Port Black Multi-Tap Pre-Insulated Connector, 750 MCM - 1/0 AWG
IPLD750-14	Polaris Black	14-Port Black Multi-Tap Pre-Insulated Connector, 750 MCM - 1/0 AWG
IPLD750-3	Polaris Black	3-Port Black Multi-Tap Pre-Insulated Connector, 750 MCM - 1/0 AWG
IPLD750-4	Polaris Black	4-Port Black Multi-Tap Pre-Insulated Connector, 750 MCM - 1/0 AWG
IPLD750-5	Polaris Black	5-Port Black Multi-Tap Pre-Insulated Connector, 750 MCM - 1/0 AWG
IPLD750-6	Polaris Black	6-Port Black Multi-Tap Pre-Insulated Connector, 750 MCM - 1/0 AWG
IPLD750-8	Polaris Black	8-Port Black Multi-Tap Pre-Insulated Connector, 750 MCM - 1/0 AWG
IPLDH750-10	Polaris Black	10-Port Black Heavy-Duty Pre-Insulated Connector, 750 - 250 MCM
IPLDH750-3	Polaris Black	3-Port Black Heavy-Duty Pre-Insulated Connector, 750 - 250 MCM
IPLDH750-4	Polaris Black	4-Port Black Heavy-Duty Pre-Insulated Connector, 750 - 250 MCM
IPLDH750-5	Polaris Black	5-Port Black Heavy-Duty Pre-Insulated Connector, 750 - 250 MCM
IPLDH750-6	Polaris Black	6-Port Black Heavy-Duty Pre-Insulated Connector, 750 - 250 MCM
IPLDH750-8	Polaris Black	8-Port Black Heavy-Duty Pre-Insulated Connector, 750 - 250 MCM
IPLMD250-10	Polaris Black	10-Port Black Mountable Pre-Insulated Connector, 250 MCM - 6 Gauge
IPLMD250-12	Polaris Black	12-Port Black Mountable Pre-Insulated Connector, 250 MCM - 6 Gauge
IPLMD250-3	Polaris Black	3-Port Black Mountable Pre-Insulated Connector, 250 MCM - 6 Gauge
IPLMD250-4	Polaris Black	4-Port Black Mountable Pre-Insulated Connector, 250 MCM - 6 Gauge
IPLMD250-5	Polaris Black	5-Port Black Mountable Pre-Insulated Connector, 250 MCM - 6 Gauge
IPLMD250-6	Polaris Black	6-Port Black Mountable Pre-Insulated Connector, 250 MCM - 6 Gauge
IPLMD250-8	Polaris Black	8-Port Black Mountable Pre-Insulated Connector, 250 MCM - 6 Gauge
IPLMD3/0-3	Polaris Black	3-Port Black Mountable Pre-Insulated Connector, 3/0 - 6 Gauge
IPLMD3/0-4	Polaris Black	4-Port Black Mountable Pre-Insulated Connector, 3/0 - 6 Gauge
IPLMD3/0-5	Polaris Black	5-Port Black Mountable Pre-Insulated Connector, 3/0 - 6 Gauge
IPLMD350-10	Polaris Black	10-Port Black Mountable Pre-Insulated Connector, 350 MCM - 10 AWG
IPLMD350-12	Polaris Black	12-Port Black Mountable Pre-Insulated Connector, 350 MCM - 10 AWG
IPLMD350-3	Polaris Black	3-Port Black Mountable Pre-Insulated Connector, 350 MCM - 10 AWG
IPLMD350-4	Polaris Black	4-Port Black Mountable Pre-Insulated Connector, 350 MCM - 10 AWG
IPLMD350-5	Polaris Black	5-Port Black Mountable Pre-Insulated Connector, 350 MCM - 10 AWG
IPLMD350-6	Polaris Black	6-Port Black Mountable Pre-Insulated Connector, 350 MCM - 10 AWG
IPLMD350-8	Polaris Black	8-Port Black Mountable Pre-Insulated Connector, 350 MCM - 10 AWG
IPLMD500-10	Polaris Black	10-Port Black Mountable Pre-Insulated Connector, 500 MCM - 4 AWG
IPLMD500-12	Polaris Black	12-Port Black Mountable Pre-Insulated Connector, 500 MCM - 4 AWG
IPLMD500-3	Polaris Black	3-Port Black Mountable Pre-Insulated Connector, 500 MCM - 4 AWG
IPLMD500-4	Polaris Black	4-Port Black Mountable Pre-Insulated Connector, 500 MCM - 4 Gauge
IPLMD500-5	Polaris Black	5-Port Black Mountable Pre-Insulated Connector, 500 MCM - 4 AWG
IPLMD500-6	Polaris Black	6-Port Black Mountable Pre-Insulated Connector, 500 MCM - 4 Gauge
IPLMD500-8	Polaris Black	8-Port Black Mountable Pre-Insulated Connector, 500 MCM - 4 Gauge
IPLMD600-10	Polaris Black	10-Port Black Mountable Pre-Insulated Connector, 600 MCM - 6 AWG

VISION TAP® & BLACK

Line Side of Service

CATALOG NUMBER	DESCRIPTION	CONNECTOR SIZE
IPLMD600-12	Polaris Black	12-Port Black Mountable Pre-Insulated Connector, 600 MCM - 6 AWG
IPLMD600-3	Polaris Black	3-Port Black Mountable Pre-Insulated Connector, 600 MCM - 6 AWG
IPLMD600-4	Polaris Black	4-Port Black Mountable Pre-Insulated Connector, 600 MCM - 6 AWG
IPLMD600-5	Polaris Black	5-Port Black Mountable Pre-Insulated Connector, 600 MCM - 6 AWG
IPLMD600-6	Polaris Black	6-Port Black Mountable Pre-Insulated Connector, 600 MCM - 6 AWG
IPLMD600-8	Polaris Black	8-Port Black Mountable Pre-Insulated Connector, 600 MCM - 6 AWG
IPLMD750-12	Polaris Black	12-Port Black Mountable Pre-Insulated Connector, 750 MCM - 1/0 AWG
IPLMD750-3	Polaris Black	3-Port Black Mountable Pre-Insulated Connector, 750 MCM - 1/0 AWG
IPLMD750-4	Polaris Black	4-Port Black Mountable Pre-Insulated Connector, 750 MCM - 1/0 AWG
IPLMD750-6	Polaris Black	6-Port Black Mountable Pre-Insulated Connector, 750 MCM - 1/0 AWG
IPLMD750-8	Polaris Black	8-Port Black Mountable Pre-Insulated Connector, 750 MCM - 1/0 AWG
ISR-250	Polaris Black	2-Port Black Multi-Tap Pre-Insulated Connector, 250 MCM - 6 AWG
ISR-350	Polaris Black	2-Port Black Multi-Tap Pre-Insulated Connector, 350 MCM - 10 AWG
ISR-500	Polaris Black	2-Port Black Multi-Tap Pre-Insulated Connector, 500 MCM - 4 AWG
ISR-600	Polaris Black	2-Port Black Multi-Tap Pre-Insulated Connector, 600 MCM - 6 AWG
ISRH-750	Polaris Black	2-Port Black Multi-Tap Pre-Insulated Connector, 750 MCM - 1/0 AWG
IT-2/0	Polaris Black	2-Port Black Multi-Tap Pre-Insulated Connector, 2/0 - 14 AWG
IT-250	Polaris Black	2-Port Black Multi-Tap Pre-Insulated Connector, 250 MCM - 6 AWG
IT-3/0	Polaris Black	2-Port Black Multi-Tap Pre-Insulated Connector, 3/0 - 6 AWG
IT-350	Polaris Black	2-Port Black Multi-Tap Pre-Insulated Connector, 350 MCM - 10 AWG
IT-500	Polaris Black	2-Port Black Multi-Tap Pre-Insulated Connector, 500 MCM - 4 AWG
IT-600	Polaris Black	2-Port Black Multi-Tap Pre-Insulated Connector, 600 MCM - 6 AWG
IT-750	Polaris Black	2-Port Black Multi-Tap Pre-Insulated Connector, 750 MCM - 1/0 AWG
ITD-2/0	Polaris Black	2-Port Black Multi-Tap Pre-Insulated Connector, 2/0 - 14 AWG
ITD-3/0	Polaris Black	2-Port Black Multi-Tap Pre-Insulated Connector, 3/0 - 6 AWG
ITH-750	Polaris Black	2-Port Black Heavy-Duty Pre-Insulated Connector, 750 MCM - 1/0 AWG
ITO-3/0	Polaris Black	2-Port Black Multi-Tap Pre-Insulated Connector, 3/0 - 6 AWG
IPL250-3C	Vision Tap	3-Port Clear Multi-Tap Pre-Insulated Connector, 250 MCM - 6 AWG
IPL250-4C	Vision Tap	4-Port Clear Multi-Tap Pre-Insulated Connector, 250 MCM - 6 AWG
IPL3/0-3C	Vision Tap	3-Port Clear Multi-Tap Pre-Insulated Connector, 3/0 - 6 AWG
IPL3/0-4C	Vision Tap	4-Port Clear Multi-Tap Pre-Insulated Connector, 3/0-6 AWG
IPL350-3C	Vision Tap	3-Port Clear Multi-Tap Pre-Insulated Connector, 350 MCM - 10 AWG
IPL500-3C	Vision Tap	3-Port Clear Multi-Tap Pre-Insulated Connector, 500 MCM - 4 AWG
IPL500-4C	Vision Tap	4-Port Clear Multi-Tap Pre-Insulated Connector, 500 MCM - 4 AWG
IPLD2/0-3C	Vision Tap	3-Port Clear Multi-Tap Pre-Insulated Connector, 2/0 AWG - 14 AWG
IPLD2/0-4C	Vision Tap	4-Port Clear Multi-Tap Pre-Insulated Connector, 2/0 AWG - 14 AWG
IPLD2/0-5C	Vision Tap	5-Port Clear Multi-Tap Pre-Insulated Connector, 2/0 AWG - 14 AWG
IPLD2/0-6C	Vision Tap	6-Port Clear Multi-Tap Pre-Insulated Connector, 2/0 AWG - 14 AWG
IPLD250-3C	Vision Tap	3-Port Clear Multi-Tap Pre-Insulated Connector, 250MCM - 6 AWG
IPLD250-4C	Vision Tap	4-Port Clear Multi-Tap Pre-Insulated Connector, 250 MCM - 6 AWG
IPLD250-5C	Vision Tap	5-Port Clear Multi-Tap Pre-Insulated Connector, 250 MCM - 6 AWG
IPLD250-6C	Vision Tap	6-Port Clear Multi-Tap Pre-Insulated Connector, 250MCM - 6 AWG
IPLD250-8C	Vision Tap	8-Port Clear Multi-Tap Pre-Insulated Connector, 250 MCM - 6 AWG
IPLD3/0-3C	Vision Tap	3-Port Clear Multi-Tap Pre-Insulated Connector, 3/0 - 6 AWG
IPLD3/0-4C	Vision Tap	4-Port Clear Multi-Tap Pre-Insulated Connector, 3/0 - 6 AWG
IPLD3/0-6C	Vision Tap	6-Port Clear Multi-Tap Pre-Insulated Connector, 3/0 - 6 AWG
IPLD350-3C	Vision Tap	3-Port Clear Multi-Tap Pre-Insulated Connector, 350 MCM - 10 AWG
IPLD350-4C	Vision Tap	4-Port Clear Multi-Tap Pre-Insulated Connector, 350 MCM - 10 AWG
IPLD350-5C	Vision Tap	5-Port Clear Multi-Tap Pre-Insulated Connector, 350 MCM - 10 AWG
IPLD350-6C	Vision Tap	6-Port Clear Multi-Tap Pre-Insulated Connector, 350MCM - 10 AWG
IPLD350-8C	Vision Tap	8-Port Clear Multi-Tap Pre-Insulated Connector, 350 MCM - 10 AWG
IPLD500-10C	Vision Tap	10-Port Clear Multi-Tap Pre-Insulated Connector, 500 MCM - 4 AWG
IPLD500-3C	Vision Tap	3-Port Clear Multi-Tap Pre-Insulated Connector, 500 MCM - 4 AWG
IPLD500-4C	Vision Tap	4-Port Clear Multi-Tap Pre-Insulated Connector, 500MCM - 4
IPLD500-5C	Vision Tap	5-Port Clear Multi-Tap Pre-Insulated Connector, 500 MCM - 4 AWG
IPLD500-6C	Vision Tap	6-Port Clear Multi-Tap Pre-Insulated Connector, 500 MCM - 4 AWG
IPLD500-8C	Vision Tap	8-Port Clear Multi-Tap Pre-Insulated Connector, 500 MCM - 4 AWG

NEC 230.46 UL-LISTED OPTIONS



CATALOG NUMBER	DESCRIPTION	CONNECTOR SIZE
IPLD600-3C	Vision Tap	3-Port Clear Multi-Tap Pre-Insulated Connector, 600 MCM - 6 AWG
IPLD600-4C	Vision Tap	4-Port Clear Multi-Tap Pre-Insulated Connector, 600 MCM - 6 AWG
IPLD600-5C	Vision Tap	5-Port Clear Multi-Tap Pre-Insulated Connector, 600 MCM - 6 AWG
IPLD600-6C	Vision Tap	6-Port Clear Multi-Tap Pre-Insulated Connector, 600 MCM - 6 AWG
IPLD600-8C	Vision Tap	8-Port Clear Multi-Tap Pre-Insulated Connector, 600 MCM - 6 AWG
IPLD750-3C	Vision Tap	3-Port Clear Multi-Tap Pre-Insulated Connector, 750 MCM - 1/0 AWG
IPLD750-4C	Vision Tap	4-Port Clear Multi-Tap Pre-Insulated Connector, 750 MCM - 1/0 AWG
IPLD750-6C	Vision Tap	6-Port Clear Multi-Tap Pre-Insulated Connector, 750 MCM - 1/0 AWG
IPLD750-8C	Vision Tap	8-Port Clear Multi-Tap Pre-Insulated Connector, 750 MCM - 1/0 AWG
ISR-250C	Vision Tap	2-Port Clear In-Line Pre-Insulated Connector, 250 MCM-6 AWG
ISR-350C	Vision Tap	2-Port Clear In-Line Pre-Insulated Connector, 350 MCM-10 AWG
ISR-500C	Vision Tap	2-Port Clear In-Line Pre-Insulated Connector, 500 MCM-4 AWG
ISR-600C	Vision Tap	2-Port Clear Multi-Tap Pre-Insulated Connector, 600 MCM - 6 AWG
ISRH-750C	Vision Tap	2-Port Clear Multi-Tap Pre-Insulated Connector, 750 MCM - 1/0 AWG
IT-2/0C	Vision Tap	2-Port Clear Multi-Tap Pre-Insulated Connector, 2/0 - 14 AWG
IT-250C	Vision Tap	2-Port Clear Multi-Tap Pre-Insulated Connector, 250 MCM - 6 AWG
IT-3/0C	Vision Tap	2-Port Clear Multi-Tap Pre-Insulated Connector, 3/0 - 6 AWG
IT-350C	Vision Tap	2-Port Clear Multi-Tap Pre-Insulated Connector, 350 MCM - 10 Gauge
IT-500C	Vision Tap	2-Port Clear Multi-Tap Pre-Insulated Connector, 500 MCM - 4 Gauge
IT-600C	Vision Tap	2-Port Clear Multi-Tap Pre-Insulated Connector, 600 MCM - 6 AWG
IT-750C	Vision Tap	2-Port Clear Multi-Tap Pre-Insulated Connector, 750 MCM - 1/0 AWG
ITD-2/0C	Vision Tap	2-Port Clear Multi-Tap Pre-Insulated Connector, 2/0 - 14 AWG
ITD-3/0C	Vision Tap	2-Port Clear Multi-Tap Pre-Insulated Connector, 3/0 AWG - 6 AWG
ITO-3/0C	Vision Tap	2-Port Clear Multi-Tap Pre-Insulated Connector, 3/0 - 6 AWG

— THE — ORIGINAL



Scan for more
information



PRE-INSULATED CONNECTORS

